

2025/26

Key Stage 4 Options Booklet



Contents / Overview

Message from the Headteacher Page 3

Useful Contacts Page 4

Options Explained Pages 5 - 8

Core Curriculum Courses Pages 9-14

English Language
English Literature
Mathematics
Science (Dual Award)
Digital Information Technology (BTEC)

All students will study all of these courses

EBacc GCSE Courses Pages 15-19

French
Geography
History
Computer Science

All students will study three of these courses

Students are **not** able to study both Drama and Music (Performing Arts)

Students are **not** able to study both '3D Design' and 'Art and Design'.

Other GCSE Courses Pages 20-25

Art and Design
3D Design
Photography
Drama
Religious Studies

*If a student is able to speak a language other than French *that can be assessed at GCSE* then you should let the school know. There will be space on the Options form for this information.

Vocational Courses Pages 26-32

Hospitality and Catering
Health and Social Care
Creative Media Production
Music (Performing Arts)
Child Development
Sport

Message from the Headteacher

Dear Student

This booklet has been produced to help you make some very important choices at this crucial stage in your education. These are the first of many choices young people have to make during their educational development. Making decisions as to which subjects you take in Key Stage 4 is both a challenge and an opportunity. This is the first time you have had to take responsibility for the direction of your education.

You will need help and guidance in deciding which opportunities are right for you. You will find details of the subjects offered within this booklet. The school places great emphasis on ensuring each student is able to make informed decisions regarding their KS4 education. You will be guided individually to ensure you select an appropriate learning pathway to meet your ability and personal preferences.

The role of parents in this process is very important. Please discuss option choices with your parents/carers. Advice is also available from subject teachers and senior members of staff. If parents would like to discuss the KS4 curriculum in more detail please contact school. Contact details are shown on the next page.

Yours faithfully



Joanna Crewe
Headteacher



Key dates

15 th January 2026	Options booklets given out; accompanying assembly – LIFE P2
21 st January 2026	Parents evening 'Options' presentation in Oasis at 4pm, 5pm, 6pm
22 nd January 2026	Options forms given out – LIFE P3
6 th February 2026	Deadline for handing in Options forms

Useful Contacts

Mrs J Crewe – Headteacher

jcrewe@chaucer.sheffield.sch.uk

Mr G Hammonds – Deputy Headteacher

ghammonds@chaucer.sheffield.sch.uk

Ms A Jackson – Assistant Headteacher: SEND

ajackson@chaucer.sheffield.sch.uk

Mr M Wright – Y9 Year Leader

mwright@chaucer.sheffield.sch.uk

Ms C Mann – Y9 Engagement Leader

cmann@chaucer.sheffield.sch.uk

Main office 0114 2322338

enquiries@chaucer.sheffield.sch.uk

Ms M Maddison – Assistant Headteacher: Careers

mmaddison@chaucer.sheffield.sch.uk

Ms S Dunn – Careers Leader

sdunn@chaucer.sheffield.sch.uk

Options Explained

This booklet provides important information about the subjects that students will study in Year 10 and 11 and the choices that are available.

In addition to this booklet, you will need your **Option Choice Form**. These will be distributed on Thursday 22nd January.

The form must be completed and handed in to school reception by **Friday 6th February**.

If any further information is required, do not hesitate to get in touch - (see 'Useful Contacts' on page 4).

What are 'Key Stage 4 Options' ?

During Key Stage 3 (Y7 to Y9), students have experienced a wide range of subjects. During Key Stage 4 (Y10 and Y11), students study a smaller number of subjects but in greater depth. For the first time, students are able to make some choices about which subjects they study. This is an opportunity to shape their education so that it suits their interests and the pathways that they wish to follow when they leave school.

Students are not given a completely free choice of subjects. The government requires us...

- to ensure that all students study the 'Core Subjects'
- to ensure that wherever possible students study the 'Ebacc' subjects: Computer Science, Modern Foreign Languages, Geography and History
- to show good performance through 'Progress 8' and 'Attainment 8' measures, which require students to study particular subjects

The Importance of English and Mathematics

The expectation that all students achieve well in both Mathematics and English is absolutely central to our curriculum offer - this will underpin students' success after leaving Chaucer.

Attaining good grades in GCSE Maths and English is a requirement for many future study and employment pathways.

All teenagers who do not achieve at least GCSE grade 4 at English and Maths will have to carry on studying the subjects at college.

School Performance Measures - English Baccalaureate, Progress 8 and Attainment 8

The English Baccalaureate was introduced by the government in 2010. It is a combination of GCSE qualifications:

- English Language and Literature
- Maths
- Sciences
- Geography or History
- A language

The following is from www.gov.uk

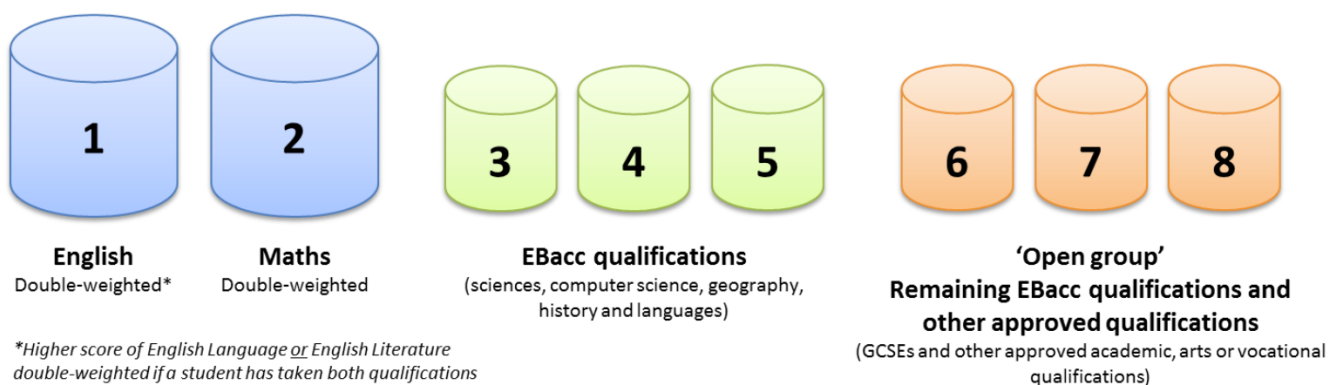
"The EBacc is made up of the subjects which are considered essential to many degrees and open up lots of doors.

A study by the UCL Institute of Education shows that studying subjects included in the EBacc provides students with greater opportunities in further education and increases the likelihood that a pupil will stay on in full-time education. Sutton Trust research reveals that studying the EBacc can help improve a young person's performance in English and maths.

The government's ambition is to see 75% of pupils studying the EBacc subject combination at GCSE by 2022, and 90% by 2025."

As a school, we have a duty to ensure that a good proportion of our students work towards the full English Baccalaureate.

Schools are also judged on measures called 'Progress 8' and 'Attainment 8'. These look at average performance across 8 of their subjects:



Even if students do not study the 'full EBacc', their qualifications still need to meet the requirements for Progress 8 and Attainment 8, set out in the diagram above.

As part of the options process, we must fill the three 'EBacc qualifications' slots. Two of these will be filled by Science (dual award). Slot 5 must be filled by either French, Geography, History or Computer Science.

GCSE courses

The subject pages later in this booklet give an overview of what each course involves and how they are assessed.

For GCSE courses, all external examinations are taken at the end of Year 11. This means that re-sits are not possible.

In the majority of subjects there is no coursework or controlled assessment. See the subject pages for more information.

Vocational Qualifications

Vocational courses offer something different to GCSE. They are more closely related to specific careers and types of work.

Exams for these subjects are spread over the course. There may be resit opportunities for some modules.

Most vocational courses will be awarded at grades:

- Level 1 (equivalent to GCSE grades 1 to 3)
- Level 2 passes at Pass, Merit and Distinction (equivalent to GCSE grades 4 to 8)

Options

All students will study our core curriculum (Maths, English Literature, English Language, Science and Digital Information Technology) and another three 'Options' subjects.

Typically, students will have the following time allocations over our two-week timetable:

- 10 hours of English (GCSE English Language and GCSE English Literature)
- 10 hours of Maths
- 10 hours of Science leading to the dual award (2 GCSEs) in Combined Science
- 3 hours in BTEC Digital IT
- 5 hours in each of the 3 'Options' subjects
- 2 hours of core PE

How to make your choices

There are many reasons to choose a subject...

- Enjoyment! You will be studying the course for 2 years.
- Ability - choose subjects that you are good at.
- A balanced education. Balance in your choice of subjects will provide you with a wider range of pathways and opportunities in the future.
- Career relevance. You may not know exactly which employment pathway you will take yet, but even if you have just a vague idea it can be worthwhile finding out which subjects would be essential or useful.

Just as importantly, there are some things which must **not** be reasons to choose a subject...

- Friendships. Do not choose a subject just because a friend is. You are not guaranteed to end up in the same group as them.
- Teacher. You may like the teacher you currently have for the subject but you are not guaranteed to have this teacher in Y10 or Y11.
- Easy. Don't choose a subject just because you think it may be easy. Check out all the details in the option booklet before deciding on your choices.

Completing your options form

Please read all the information in this booklet and discuss it within your family.

Option Choice Forms will be handed out on Thursday 22nd January.

Forms must be completed and handed in to the main office by **Friday 6th February**.

From Friday 6th February onwards, we will begin to build a timetable for September 2026 that enables as many students as possible to have their 'first choice' options.

However, we cannot guarantee that a student will get their first-choice subjects. Some courses may have more students applying than we can cater for; other courses may not have enough students to be viable to run.

Any forms submitted after the deadline could make it more difficult to match your choices, as groups may already be full.

Core Subjects

All students will study these subjects

GCSE English Language

<p>Why should I study this course?</p> <p>Everyone needs to understand and to be understood. This is why English is very important. You will need to develop the skills of writing in a variety of ways, understanding what you read and putting your thoughts into words in every subject you do. Doing well in English will help you to do better in other subjects and will be important when applying for college courses, training schemes and employment. You may also find the combination of writing and speaking elements in the course very enjoyable. They will certainly help you to be more confident and to communicate better in and beyond school.</p>	<p>What qualifications will I get?</p> <p>You will gain a single GCSE qualification in English Language.</p>
<p>What will I do?</p> <p>During your two-year course you will learn to use words in a variety of ways, from creative writing in stories, plays and poems to more formal writing based on non-fiction texts. To help you with this you will read a wide range of books, see films and videos. You may also visit the theatre and cinema or work with real live authors and poets.</p> <p>Another important part of the course is speaking, which will be reported separately to your grade. You will take part in group discussions, role play, give talks and interviews.</p>	<p>How will the course be assessed?</p> <p>The course is assessed by 100% exam</p> <p>Unit 1 (40% of the final grade):</p> <ul style="list-style-type: none">• Explorations in Creative Reading and Writing• Understanding and producing fiction texts <p>Unit 2 (60% of the final grade):</p> <ul style="list-style-type: none">• Writers' Viewpoints and Perspectives• Understanding and Producing non-fiction texts <p>Unit 3: A Speaking and Listening task, for which you get a grade reported separately</p>
<p>What could I do after studying this course?</p> <p>GCSE English language is a basic requirement for virtually all courses and jobs. You will need at least a grade 4 in GCSE English language to be accepted on a Level 3 course at college (these include A levels and National Diplomas) If you achieve a grade 5 or above, you might like to study A level English Language or Literature – even take a degree in this subject.</p> <p>Some careers specifically related to English include journalism, secretarial, personal assistant, librarian, and teacher.</p>	<p>Who should I contact for further information?</p> <p>For further information please speak to your English teacher or Mrs McInnis lmcinnis@chaucer.sheffield.sch.uk</p>

GCSE English Literature

<p>Why should I study this course?</p> <p>You will be reading texts that you will find very enjoyable and stimulating. You will be studying poetry, drama and novels from some of the most important writers from the past and present.</p> <p>You will understand how writers use language and the motivations of characters in texts.</p> <p>You will develop skills and understanding that will help you gain a good qualification in English language as well as English literature.</p>	<p>What qualifications will I get?</p> <p>You will gain a single GCSE qualification in English Literature.</p>
<p>What will I do?</p> <p>During your two-year course, you will learn to write well-crafted essays that show your knowledge of the texts you have studied. To help you with this, you will read a wide range of books and see film versions of them. You may also visit the theatre and cinema to watch productions of the texts you have studied.</p>	<p>How will the course be assessed?</p> <p>The course is assessed by 100% exam</p> <p>Unit 1 (40% of GCSE):</p> <ul style="list-style-type: none">• Shakespeare – Macbeth• 19th century novel – Jekyll and Hyde <p>Unit 2 (60% of GCSE):</p> <p>Modern texts and poetry – An Inspector Calls</p> <p>Anthology Poetry and Unseen Poetry</p>
<p>What could I do after studying this course?</p> <p>If you achieve a grade 5 or above, you might like to study A level English literature – even take a degree in this subject.</p> <p>Some careers where English literature can lead to include: journalism, publishing, working in advertising, librarian, and teacher.</p>	<p>Who should I contact for further information?</p> <p>For further information please speak to your English teacher or Mrs McInnis lmcinnis@chaucer.sheffield.sch.uk</p>

GCSE Mathematics

<p>Why should I study this course?</p> <p>Confidence with mathematical reasoning is essential for everybody's future. Some students will pursue pathways requiring advanced mathematical skills. Many will enter careers that hinge on their ability to be adaptable and to solve problems. All will engage in financial planning and decision making that will be critical for their long-term happiness and wellbeing.</p>	<p>What qualifications will I get?</p> <p>You will get a GCSE in Mathematics.</p>
<p>What will I do?</p> <p>You will study a variety of units that fall within the categories of number, algebra, data, shape and geometry.</p> <p>The 9-1 GCSE course involves a balance of procedural skills questions along with questions that involve problem solving and reasoning.</p>	<p>How will the course be assessed?</p> <p>The GCSE is assessed through 3 examinations at the end of Year 11:</p> <p>Edexcel</p> <p>Paper 1: Non - calculator Paper 2: Calculator Paper 3: Calculator</p> <p>Each assessment is worth 80 marks.</p> <p>The foundation tier is graded from 1-5. The higher tier is graded from 4-9.</p>
<p>What could I do after studying this course?</p> <p>Many college courses set a Grade 4 in mathematics as an entry requirement (some will require a Grade 5 or Grade 6): attaining a high grade in mathematics will ensure that you can follow your chosen pathway in the future, even if it isn't a mathematics course.</p> <p>A Level mathematics is a required qualification for higher education pathways in computing, accountancy, economics and of course mathematics.</p>	<p>Who should I contact for further information?</p> <p>Mrs Pinder or Mrs Furness, subject leaders for maths</p> <p>cpinder@chaucer.sheffield.sch.uk sfurness@chaucer.sheffield.sch.uk</p>

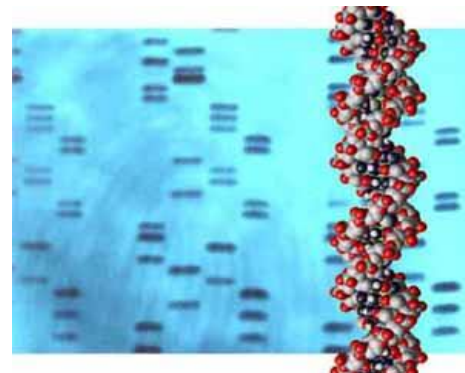
GCSE Dual Science

Why should I study this course?

AQA combined science is a course that covers the three disciplines of Biology, Chemistry and Physics. Science is suitable for all students and the course prepares students with the scientific knowledge and understanding needed to be successful in a rapidly advancing scientific world. The course also prepares students for progression to further scientific study at all levels post-16.

What qualifications will I get?

You will be awarded 2 GCSE's in Combined Science on a grade scale of 0-9.



What will I do?

You will study biology, chemistry and physics units over the two years and cover a range of science topics including:

- Cellular biology including photosynthesis and respiration.
- Molecular genetics and DNA fingerprinting and uses in the real world, for example forensic science.
- Environmental science and evolution.
- Reactions of metals and their uses.
- Chemistry of fuels, development of smart materials and chemical reactions.
- Energy, forces and electricity.
- Waves, radiation and matter.

How will the course be assessed?

Science is assessed through a series of externally set written terminal examinations which are sat at the end of year 11. There are 6 examinations which are available at either foundation or higher tier. Each exam contributes approximately 17% of the final grade awarded. There are 2 exams for biology, chemistry and physics and they last for 1 hour and 15 minutes per paper.

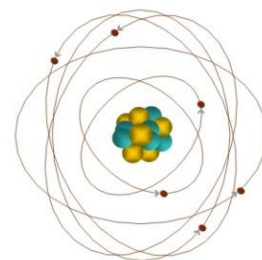
What could I do after studying this course?

In an ever-changing modern world, science is a foundation that will help with study of many courses and careers after school. These courses include scientific careers such as Forensic Science, Sports Science, Science teaching, engineering, nursing, medicine and veterinary science. Science is also useful for anyone considering careers as an electrician, plumber, general teaching, working with animals and the hair and beauty industry.

Who should I contact for further information?

Your science teacher or Ms Hudson, Subject Leader for Science.

hhudson@chaucer.sheffield.sch.uk



GCSE EBacc Subjects

GCSE French

Why should I study this course?

“One language sets you in a corridor for life. Two languages open every door along the way.” – Frank Smith

The ability to communicate in another language is an extremely valuable life skill – both personally and professionally.

On a personal level it gives you an opportunity to develop high levels of resilience, confidence and awareness of other people and their cultures. People who learn a second language have a deeper understanding of their own language and have a greater respect for those who speak more than one language.

From an academic point of view, many universities now expect high quality candidates to have some understanding of at least one other language. This is because it demonstrates passion, an ability to learn and a hunger for knowledge.

In today's global economy, employers are keen to have... people with language skills working for them. Modern foreign languages also combine well with other professions such as Law, Engineering, Accounting and Medicine. People who can offer language skills in addition to their specialist knowledge are very much in demand today's competitive job market. Tourism is another popular career route as are jobs associated with the media and catering industries.

What qualifications will I get?

GCSE in French.

How will the course be assessed?

The new GCSE is broken down into 4 key skill areas.

Listening – 25%
Reading – 25%
Speaking – 25%
Writing – 25%

Each skill will be assessed at the end of the two-year course in the form of an exam.

What will I do?

The course covers three key themes:

- People and lifestyle
- Popular culture
- Communication and the world around us

These themes encompass a range of engaging and interesting topics, ranging from 'Social Media' to 'Extreme Sports' – there really is something for everyone!

You will continue to build on the foundation built at KS3 and by the end will be prepared to continue studying French at A Level or have a bank of study skills ready to go on pursue other languages, or indeed other interests.

Who should I contact for further information?

Ms Dennis

edennis@chaucer.sheffield.sch.uk

What could I do after studying this course?

Many students decide to continue their language learning at A-level, some even take it further to degree level. Alternatively, you may decide to use your language skills to study a new language.

If, after the GCSE, you decide not to continue with languages it will always be a valuable experience to have on your CV as it tells employers, colleges and universities that you are a brave, open-minded, resilient person.

GCSE Geography

Why should I study this course?

Studying **AQA GCSE Geography** helps students understand how the real-world works, from climate change and natural hazards to global development and city growth. The course links learning to real events, making it relevant and engaging. It also develops valuable skills such as data interpretation, map reading, problem-solving, balanced writing, and fieldwork — all of which are useful in many other subjects and future careers.

Geography also keeps future pathways open because it connects with science, maths, economics, and history, leading to careers in environmental science, urban planning, disaster management, government, business, and more. What students learn encourages them to think critically about global issues like climate change, inequality, and sustainability.

What will I do?

The course is split into human and physical geography, with a final paper based on fieldwork and a synoptic element that combines both physical and human Geography together.

Paper 1, Physical Geography covers:

- Natural Hazards – Tectonics, Weather and Climate Change
- Ecosystems, Tropical Rainforests and Hot Deserts.
- Physical Environments – River Systems and Coastal Systems.

Paper 2. Human Geography Covers:

- Global Development
- Urbanisation
- Resource Management focusing on Food, Water and Energy use around the world.

Paper 3. Synoptic

This paper includes fieldwork questions but also a pre-release booklet. The booklet is shared with you 12 weeks before the exam and we can practice questions on this and prepare you well for Paper 3.

What could I do after studying this course?

Geography is a broad-based academic subject which will open up options for you in your future. Employers and universities see geography as a robust academic subject rich in skills, knowledge and understanding.

As a subject linking the arts and the sciences it is highly flexible in terms of what you can combine it with, both at GCSE and A Level. If you choose to take geography on to university, there are hundreds of courses to choose from and the range of career areas accessed by graduates of geography will probably surprise you.

What qualifications will I get?

GCSE in AQA Geography

You can also use GCSE Geography as part of the Ebacc qualification



How will the course be assessed?

You will take 3 exams in the summer

- Physical Geography Paper
- Human Geography Paper
- Synoptic and Fieldwork Paper



Who should I contact for further information?

For further information please speak to Mr Hague-Brown, Subject Leader for geography

ihague-brown@chaucer.sheffield.sch.uk



GCSE History

Why should I study this course?

There are many, many reasons why history is so important, almost as many as years of human existence!

History helps you discover how the world you live in today has evolved and to understand how things have come to be as they are. It provides you with context to understand the world around you and the society you live in. History helps you to develop the skills to look beyond the headlines, to ask questions properly and to express your own opinions. History lets you learn how and why people behaved as they did, whether they are Elizabeth I, Adolf Hitler or Martin Luther King Jr.

What will I do?

You will complete the Eduqas GCSE History course.

You will begin by studying a British Depth study called Conflict and Upheaval covering the time period 1337-1381, followed by a non-British depth study on Germany 1919-1939. After this you will look at a specific country and time period of that country USA 1929-2000 and finally the development over time of a specific theme – Crime and Punishment.

What could I do after studying this course?

GCSE History is highly prized by colleges and employers. Success in the subject provides students with the ability to express their views and opinions (both oral and written) in a clear manner. It also enables students to put forward well researched ideas and arguments in a concise manner, to investigate and assess a variety of materials and to organise such material in a logical and coherent way. The study of History can be used in many diverse careers from teaching and museum work to journalism and the media, to law and politics.

What qualifications will I get?

One GCSE with the 9-1 grading system
The awarding body is Eduqas.

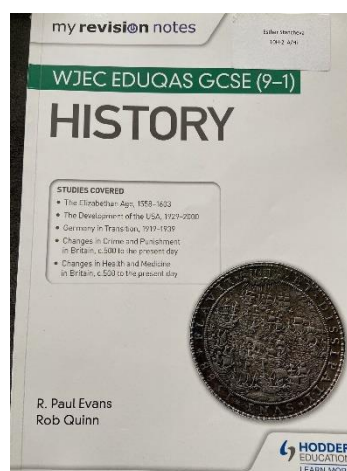
How will the course be assessed?

Modern World History

The assessment takes place at the end of the year in the form of two written exams, based on four different time periods of History both British and World History including studies on, Conflict and Power, Crime and Punishment, America 1929-2000 and Nazi Germany.

Who should I contact for further information?

See Mr Myers or email smyers@chaucer.sheffield.sch.uk



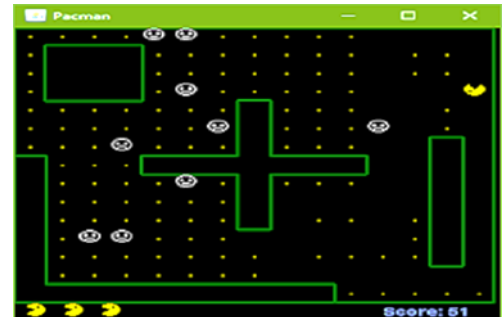
GCSE Computer Science

Why should I study this course?

The GCSE in Computer Science is a course designed to allow students to find out how computers actually work. Anyone who enjoys using computers to solve problems and make things happen will enjoy the course. This is a high level of thinking course and you will need strong attention to detail, and a high level of self-motivation. You will be learning how computer games are programmed and create simple programs for yourself.

What qualifications will I get?

GCSE qualification (9-1)



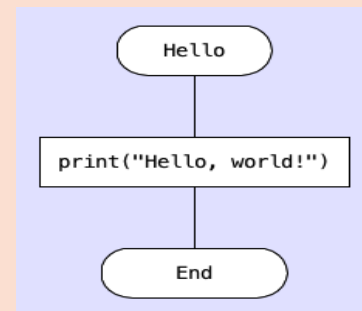
What will I do?

You will study a range of topics including designing and interpreting algorithms, learn how data is represented, understanding the components of computer systems and networking. The course will be assessed by 2 examinations. The written paper is a rigorous, intellectually challenging examination with a weighting of 50% that requires a high level of computational thinking. You will also complete a computer practical exam of your coding skills which contributes to 50% of your grade.

How will the course be assessed?

1 written exam taken at the end of year 11.

1 computer practical exam taken at the end of year 11.



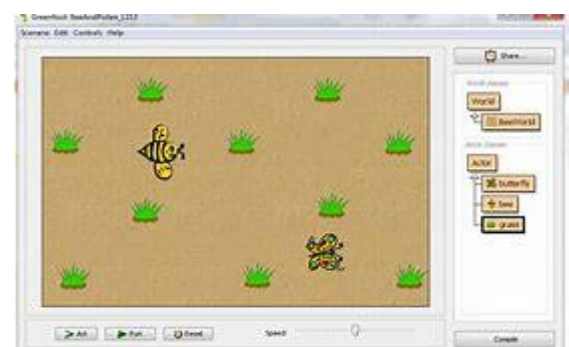
What could I do after studying this course?

This computer science course provides you with valuable skills for working in a programming environment. You will have learned the core principals of computer programming which are common in app and games development. This course will fully prepare you for A Levels in Computing, or apprenticeships in software or game design.

Typical careers following computer science are games developer, web developer, network technician, software testing, data security.

Who should I contact for further information?

For further information please speak to Mr Gillott or email him via mgillott@chaucer.sheffield.sch.uk



GCSE Other Subjects

GCSE Art and Design

<p>Why should I study this course?</p> <p>GCSE Art and Design is a fantastic course which allows you to discover the work of exciting artists, designers and craftspeople and experiment with a wide range of art materials and techniques. You will have the opportunity to take part in gallery visits to study the work of artists and enrich your portfolio.</p>	<p>What qualifications will I get?</p> <p>A GCSE in Art and Design</p>
<p>What will I do?</p> <p>In Year 10 you will take part in workshops to develop your skills in a range of techniques including drawing and painting, sculpture, ceramics, printmaking (etching/ mono-printing), felt making, silk painting, and batik. You will investigate the work of a range of artists, craft persons and designers to help you develop your ideas. You will use all this work to explore and develop ideas, and then you will make a final piece.</p> <p>At the end of Y10 you will begin your next piece of work, and we hope to take you to the Yorkshire Sculpture Park for inspiration. You will develop your own responses from several starting points, and could choose to do clay work, fashion design, painting, architectural models, textiles or fine art. You will make drawings and recordings, investigate the work of others and again use this work to make your individual final piece.</p> <p>January of Y11, you will receive your exam paper from AQA. You will have 7 questions to choose from, and several weeks to prepare your response. You know how to do this- because it is the same process you have done for your coursework. After the preparation period, you will have 10 hours of supervised time to complete a final piece. Usually, the 10 hours would run in 5 sessions over 2 weeks.</p>	<p>How will the course be assessed?</p> <p>60% portfolio</p> <p>At the end of Y11 you will present:</p> <ul style="list-style-type: none">• 1 or more completed project assignments (prep / research / development / final piece)• Portfolio of work from the course (study sheets / homework book / experimental and workshop pieces) <p>40% controlled assessment</p> <p>10 hour examination which takes place over several days, working in the Art classroom. You will develop and complete a piece of artwork.</p>
<p>What could I do after studying this course?</p> <p>There are many jobs that you could consider after studying GCSE Art & Design: Animator, Graphic Designer, Photographer, Teacher, Artist, Set Designer, Prop Designer, Illustrator, Architect, Marketing – TV & Radio, Beautician, Fashion designer, Architect, Landscape Gardener, Interior designer.</p>	<p>Who should I contact for further information?</p> <p>Miss Kalnars ckalnars@chaucer.sheffield.sch.uk</p>

GCSE 3D Design

<p>Why should I study this course?</p> <p>3D-Design is an exciting and creative course. You will combine an understanding of materials and manufacturing with your own creative visions, taking charge of the design process.</p>	<p>What qualifications will I get?</p> <p>GCSE qualification in 3D Design</p>
<p>What will I do?</p> <p>You will investigate the historical, social, cultural, environmental and economic influences on Design and Technology, whilst enjoying opportunities to put your learning into practice by producing prototypes, models and two-dimensional development studies.</p> <p>You will also gain a real understanding of what it means to be a designer, experiencing all elements of the design process using a range of materials including paper, card, wood, metal and plastic.</p> <p>You will develop an awareness of aesthetics and ergonomics and the relationship between form and function.</p>	<p>How will the course be assessed?</p> <p>Students are assessed on how well they have met the 4 assessment objectives, each of which contributes 25% to your GCSE.</p> <p>AO1: Developing Ideas AO2: Designing, refining, experimenting and testing AO3: Recording AO4: Final Pieces of Work</p> <p>60% of the grade is for coursework</p> <p>40% of the grade is for a controlled assessment, where a mini-project brief is set in January for Year 11 and 10 hours allocated for completion</p>
<p>What could I do after studying this course?</p> <p>Students who want to follow a pathway in 3D Design can continue with A Level or College based courses which then lead to degree or other higher education study options.</p> <p>All of the following are career options following the study of 3D Design: Product Design, Industrial Design, Architecture, Interior Design, Jewellery Design, Set Design, Computer Aided Design and Manufacture, Engineering, Theatre or Film Prop Design.</p>	<p>Who should I contact for further information?</p> <p>Miss Kalnars ckalnars@chaucer.sheffield.sch.uk</p>

GCSE Photography

<p>Why should I study this course? Photography develops visual awareness, creative skills and aesthetic judgement.</p>  <p>You will gain practical experience in communicating meanings, ideas and intentions through the medium of photography, exploring colour, line, tone, texture, shape, pattern, composition, scale, sequence, surface, contrast as well as gaining knowledge of important photographers.</p>	<p>What qualifications will I get? GCSE in Photography</p>
<p>What will I do?</p> <p>Your studies will cover all aspects of photography (primarily digital), allowing a breadth of exploration of image making techniques.</p> <p>You will work in one or more area(s) of photography, such as portraiture, location photography, studio photography, experimental imagery, installation, documentary photography, photojournalism, moving image: film, video and animation, fashion photography.</p> <p>You will be required to study the work of Photographers in order to develop your own work further. Much of this work will involve experimentation of techniques and developing ideas in a sketchbook.</p>	<p>How will the course be assessed?</p> <p><u>Portfolio (60%)</u></p> <ul style="list-style-type: none">• Completed photographic briefs with rigorous supporting study to show the development of ideas leading to the final outcome(s)• Sketchbooks/ workbooks on a theme/ subject showing detailed studies/ ideas for future developments including in-depth critical study of the work of Photographers• Investigation of a visual concept or theme e.g. The Formal elements: colour, line, form, shape, tone, texture to further skills, knowledge and understanding <p><u>Externally set assignment (40%)</u> Task paper issued by AQA from 2nd January of year of examination with unlimited preparation time and 10hrs supervised time</p>
<p>What could I do after studying this course?</p> <p>Photography is an important subject for future careers in Art & Design, Media, Fashion, TV and Film, Teaching etc. It also provides ideas and skills for creative leisure.</p>	<p>Who should I contact for further information?</p> <p>Miss Kalnars ckalnars@chaucer.sheffield.sch.uk</p>

GCSE Drama

Why should I study this course?

You should study this course if you enjoy drama!

Your practical skills will be refined and will demonstrate creativity, reflection and resilience, as well as developing confidence and strong presentation skills.

Your written skills will be developed through a range of tasks.

Studying drama will give you opportunities for higher order thinking, by considering ideas which go beyond language. This is great creative problem solving which will help you in other areas too.

What qualifications will I get?

You will receive a GCSE in Drama for taking this course. This is through the EDUQAS exam board.



What will I do?

You will be given the opportunity to develop not only your performance skills but also your design skills in areas such as: Sound design, set design, Costume, Hair and Make-Up Design. You will collaborate in devising your own piece of theatre and perform in a performance from a text. You can choose to concentrate on acting or design. You will view a live theatre production. The Eduqas GCSE Drama specification has three components: Devising Theatre, Performing from a Text, and Interpreting Theatre

How will the course be assessed?

Component 1: Devising Theatre 40%. You will work in a team to create a piece of theatre based on a stimulus provided by the board. You will perform this and then evaluate it in a piece of coursework (750 words and an evaluation of 750 words).
Component 2: Performing from a text: 20%. You will work on a text and perform it to an outside examiner in year 11.
Component 3: 40% A written exam on the play "Find Me" by Olwyn Wymark and a theatre review based on the theatre trip.

What could I do after studying this course?

Drama will give you many skills which employers will be looking for. Being able to deliver a presentation and communicate clearly to a range of people is a skill required across many careers and a must if you are going to college or university. Some students go on to study Drama and forge careers in film, TV and theatre as actors or behind the scenes. Other jobs in the industry include Stage Managers, Press and PR Managers and Producers. Others use their skills across a broad range of careers including teaching, journalism, law and sales. Drama supports any job where you have to speak to the public or in formal settings e.g. courts or lectures.


Who should I contact for further information?

For further information please speak to Miss Patterson in 102 or email spatterson@chaucer.sheffield.sch.uk

See also the Eduqas Drama Webpage:



GCSE Religious Studies



<p>Why should I study this course?</p> <p>Religious Studies is not about making you 'religious', it is about enabling you to think for yourself about religious and moral issues. It is about you, your life and the issues you will face when you leave school and go into the multi-ethnic, multi-faith society which is the UK.</p> <p>It is an excellent course if you enjoy:</p> <ul style="list-style-type: none">• Learning about other people's beliefs, the nature of the society you live in and the big issues in life which generate debate.• gaining an understanding of what causes prejudice, hatred and violence in our world.• having the opportunity to explore religious and moral beliefs in a safe and questioning environment. <p>GCSE Religious Studies is the subject for you.</p>	<p>What qualifications will I get?</p> <p>One full GCSE in Religious Education.</p>
<p>What will I do?</p> <p>During the course we will study a variety of topics and issues, looking at them from Christian and either Islamic viewpoints. The course looks at two key components. Component 1 is the study of religions: beliefs, teachings and practices of the two selected religions. Component 2 is made up of Thematic studies where we look at 4 of the below themes. Religious, philosophical and ethical studies themes:</p> <ul style="list-style-type: none">• Theme A: Relationships and families.• Theme B: Religion and life.• Theme C: The existence of God and revelation.• Theme D: Religion, peace and conflict.• Theme E: Religion, crime and punishment.• Theme F: Religion, human rights and social justice.	<p>How will the course be assessed?</p> <p>You will complete 2 written exams at the end of year</p> <p>There is no coursework or controlled assessment.</p>
<p>What could I do after studying this course?</p> <p>The main advantage of GCSE Religious Studies is that it prepares you for life and gives you the skills you will need to make the decisions every adult faces. It is also an excellent preparation for:</p> <ul style="list-style-type: none">• A Level Social Sciences (law, sociology and psychology).• A Level Religious Studies, History and English.• Jobs that appreciate the skills GCSE Religious Studies will give you such as: medicine, the police, the armed forces and the caring professions (social work, nursing and probation service).	<p>Who should I contact for further information?</p> <p>For further information please speak to Mr Mitchell in 112 or email dmitchell@chaucer.sheffield.sch.uk</p>  A circular logo with the letters 'RE' in yellow. The 'R' has a red eye-like shape on its vertical stem. The logo is set against a dark background with a hand holding a globe.

Vocational Courses

WJEC Hospitality & Catering Award

<p>Why should I study this course?</p> <p>The hospitality industry employs 1.6 million people (around 6% of the total working population) and is worth £55 – £60 billion per year (source www.caterer.com). It is one of the fastest growing industries and is currently the 5th biggest industry in the UK.</p> <p>The course is designed to inspire and enthuse learners to consider a career in the hospitality and catering industry, rather than just being a customer or patron. It gives learners the opportunity to gain a broad knowledge and understanding of, and develop skills in, this industry. Prepare, cook and serve a variety of nutritional dishes, in a safe and hygienic manner that are suitable for different situations and customers' needs and requirements. They will look at all aspects of the business but also menu planning.</p>	<p>What qualifications will I get?</p> <p>The WJEC Level 1/2 Award in Hospitality and Catering has been designed to support students who want to learn about this vocational sector and the potential it can offer them for their careers or further study. It is most suitable as a foundation for further study, providing learners with a core depth of knowledge and a range of specialist and general skills that will support their progression to employment in the hospitality and catering industry.</p>
<p>What will I do?</p> <p>You will be taught the range of skills, techniques and knowledge needed to work in a successful career in catering.</p> <p>You will be given a good foundation of knowledge, understanding and skills that are required by the hospitality and catering industry. You will develop a variety of skills, including food preparation and cooking skills, organisation, time management, planning, communities and problem solving.</p>	<p>How will the course be assessed?</p> <p>Unit 1 – The hospitality and catering industry 40% external exam 1 hour 20 minutes.</p> <p>Unit 2 – hospitality and catering in action 60% 12-hour interval assessment with a controlled task set by WJEC.</p>
<p>What could I do after studying this course?</p> <p>With the broad knowledge & understanding of the hospitality industry, this could lead to a variety of careers such as marketing and promotion, cooking, food and beverage service, and accommodation services i.e. in restaurants, pubs, hotels, guest houses, coffee shops, and theme parks. With learners having the potential opportunity to enter employment directly in a junior job role.</p> <p>It also supports progression to a more specialised level 3 vocational or academic hospitality or catering qualification or an apprenticeship.</p>	<p>Who should I contact for further information?</p> <p>Miss Hayes the Subject Teacher - hhayes@chaucer.sheffield.sch.uk</p> <p>Miss Kalnars the Subject Leader - ckalnars@chaucer.sheffield.sch.uk</p>

BTEC Health & Social Care

<p>Why should I study this course?</p> <p>BTEC Tech Award in Health & Social Care is a practical course looking at individuals' rights, the needs of the individuals, cultural diversity, the human body and the factors affecting its development at different life stages. It is suitable for any student who is interested in finding out about or working in the Health or Social Care areas.</p>	<p>What qualifications will I get?</p> <p>BTEC Tech Awards are the equivalent of 1 GCSE at grade 1-9 depending on the level of qualification achieved.</p> <p>The grade of qualification you earn will depend on the standard of coursework you produce throughout the course and your exam grade.</p> <p>L2 Distinction* = Grade 8.5 at GCSE L2 Distinction = Grade 7 at GCSE L2 Merit = Grade 6 at GCSE L2 Pass = Grade 4 at GCSE L1 Distinction = Grade 3 at GCSE L1 Merit = Grade 2 at GCSE L1 Pass = Grade 1 at GCSE</p>
<p>What will I do?</p> <p>You will understand how we grow develop throughout our lives, get to know how the Health and Social Care sector works and the care values that underpin it as well as help to improve an individual's health and wellbeing.</p> <p>Your assignments will include using computers to create a range of professional documents.</p>	<p>How will the course be assessed?</p> <p>The course is assessed over 2 years.</p> <p>BTEC Tech Award in Health and Social Care will involve the study of 3 components. The course has two internally assessed components, and one externally assessed component. These components build on each other starting with developing knowledge and understanding of the sector, appreciating the importance of care values and analysing and evaluating their skills relating to health and wellbeing.</p>
<p>What could I do after studying this course?</p> <p>The course provides you with the knowledge and skills to go on and study level 3 qualifications at college such as BTEC Nationals in Health and Social Care. You could also go on to an apprenticeship in health and social care and early years areas.</p> 	<p>Who should I contact for further information?</p> <p>For further information please speak to Mrs Jackson / Miss Bamforth or email them at: ajackson@chaucer.sheffield.sch.uk or nbamforth@chaucer.sheffield.sch.uk</p> 

BTEC Creative Media Production

<p>Why should I study this course?</p> <p>Creative Media Production is a course which is designed to create confident creative users of IT applications and an understanding of digital media.</p> <p>It enables students to create their own media products and includes a wide variety of digital media.</p> <p>The course includes practical elements and you will be using IT in most of your lessons. You will develop a body of skills and knowledge related to the media industry.</p>	<p>What qualifications will I get?</p> <p>BTEC Tech Awards are the equivalent of 1 GCSE at grade 1-9 depending on the level of qualification achieved.</p> <p>The grade of qualification you earn will depend on the standard of coursework you produce throughout the course and your exam grade.</p> <p>L2 Distinction* = Grade 8.5 at GCSE L2 Distinction = Grade 7 at GCSE L2 Merit = Grade 6 at GCSE L2 Pass = Grade 4 at GCSE L1 Distinction = Grade 3 at GCSE L1 Merit = Grade 2 at GCSE L1 Pass = Grade 1 at GCSE</p>
<p>What will I do?</p> <p>You will study a range of topics including interpreting films, websites and adverts. You will also learn how to research a media story and learn to take dynamic photos. You will develop your practical skills and create several coursework projects.</p>	<p>How will the course be assessed?</p> <p>The course is assessed over 2 years.</p> <p>BTEC Tech Award in Creative Media Production will involve the study of 3 components. The course has two internally assessed components, and one externally assessed component. These components build on each other starting with exploring media products, developing digital media production skills and reviewing and applying digital skills and techniques.</p>
<p>What could I do after studying this course?</p> <p>This course provides you with valuable skills for working in organisations that use multimedia technology, e.g. web design, graphics and the internet.</p> <p>It will also give you an insight into the media and the world of journalism. It will give you a good start to Media, English Language and Film studies courses at college.</p>	<p>Who should I contact for further information?</p> <p>For further information please speak to Mr Gillott / Mr Wright or email via mgillott@chaucer.sheffield.sch.uk or mwright@chaucer.sheffield.sch.uk</p> 

BTEC Music (Performing Arts)

<p>Why should I study this course?</p> <p>You should take Performing Arts Music in music if you enjoy performing music, being a member of a band, or are interested in a possible career in the music industry.</p> <p>This is an opportunity to learn about the music industry and its job roles. You will learn and improve on a given instrument. You will work as a band member and as an individual. You will develop your musical and interpersonal skills in the course.</p>	<p>What qualifications will I get?</p> <p>Vocational Technical Awards are the equivalent of 1 GCSE at grade 1-9 depending on the level of qualification achieved.</p> <p>The grade of qualification you earn will depend on the standard of coursework you produce throughout the course and your exam grade.</p> <p>L2 Distinction* = Grade 8.5 at GCSE L2 Distinction = Grade 7 at GCSE L2 Merit = Grade 6 at GCSE L2 Pass = Grade 4 at GCSE L1 Distinction = Grade 3 at GCSE L1 Merit = Grade 2 at GCSE L1 Pass = Grade 1 at GCSE</p>
<p>What will I do?</p> <p><u>Unit 1: Performing:</u> You will be given a brief by the exam board. You will have to research a given, published piece of music. You will have to rehearse it and perform to a live audience. It will be recorded at the start, middle and end of the rehearsal process.</p> <p><u>Unit 2: Creating:</u> you will be given a brief by the exam board. You will need to compose an original piece of music which suits the brief. You will use garageband to create your music.</p> <p><u>Unit 3: Performing Arts in Practice.</u> You will learn about areas of the performing arts industry that need to be considered when responding to a commission and will consider these when coming up with and pitching your own idea. This will be assessed in a 20 hour write up of your learning under exam conditions.</p>	<p>How will the course be assessed?</p> <p>Unit 1: Performing Controlled assessment: 10 hours 30% of qualification 60 marks 20 marks from performance which should be between 3 and 6 minutes.</p> <p>Unit 2: Creating Controlled assessment: 10 hours 30% of qualification 60 marks 20 marks for your final composition between 3 and 10 minutes long</p> <p>Unit 3: Performing Arts in Practice External controlled assessment: 20 hours 40% of qualification 80 marks 20 marks based on composition</p> <p>All the written controlled assessments take place in IT rooms. The performances will be in school and will be reviewed by an audience for your evaluations. There is no final written exam in the hall.</p>
<p>What could I do after studying this course?</p> <p>Performing Arts Music will help you in any career you choose - you will build confidence to perform publicly and communicate your talents clearly to others.</p> <p>The course will be particularly beneficial for future pathways involving music production, music performance and events management.</p>	<p>Who should I contact for further information?</p> <p>Please see Miss Patterson for any further information on the course or email spatterson@chaucer.sheffield.sch.uk</p>

OCR Child Development

Why should I study this course?

The OCR Child Development course is designed to encourage learners to consider the development of children from conception to age 5.

It looks at health and well-being for child development; equipment and nutritional needs of children from birth to age 5 and the development of a child from birth to age 5.



What qualifications will I get?

The OCR Cambridge National Certificate is the equivalent of 1 GCSE at 9-1 grade depending on the level of qualification achieved.

The grade of qualification you earn will depend on the standard of work you produce throughout the course.

L2 Distinction* = 8.5 Grade at GCSE

L2 Distinction = 7 Grade at GCSE

L2 Merit = 6 Grade at GCSE

L2 Pass = 4 Grade at GCSE

L1 Distinction = 3 Grade at GCSE

L1 Merit = Grade 2 at GCSE

L1 Pass = Grade 1 at GCSE

What will I do?

There are 3 units that will be studied over the duration of the course.

To study this course, you will need to have opportunities to observe a child under the age of 5 outside of school. (this can be a family member or friend)

How will the course be assessed?

It consists of three units:

- One unit is assessed by exam at the end of year 11 – 40% of your grade
- Two units are internally assessed and completed in lessons; these contribute 60% of your grade

What could I do after studying this course?

The course provides you with the knowledge and skills to go on and study level 3 qualifications at college and is a good grounding for further childcare courses or entry into work or apprenticeship.



Who should I contact for further information?

For further information please speak Mr Gillott / Ms Bamforth or email via

mgillott@chaucer.sheffield.sch.uk or

nbamforth@chaucer.sheffield.sch.uk



BTEC Sport

<p>Why should I study this course?</p> <p>You will learn how and why people participate in sport.</p> <p>You will learn about how being physically active benefits us and how sport is provided for us in society.</p> <p>You will learn about the components of fitness and how these are essential to performance in sport.</p> <p>You will learn how to lead warm ups, skills and drills in sports.</p> <p>The majority of this course is studied in a classroom.</p>	<p>What qualifications will I get?</p> <p>BTEC is the equivalent of 1 GCSE at grade 1-9 depending on the level of qualification achieved.</p> <p>The grade of qualification you earn will depend on the standard of coursework you produce throughout the course and on your Written exam result.</p> <p>L2 Distinction* = 8.5 Grade at GCSE L2 Distinction = 7 Grade at GCSE L2 Merit = 6 Grade at GCSE L2 Pass = 4 Grade at GCSE L1 Distinction = 3 Grade at GCSE L1 Merit = Grade 2 at GCSE L1 Pass = Grade 1 at GCSE</p>
<p>What will I do?</p> <p>Component 1 Coursework Preparing participants to take part in Sport and Physical Activity (30%). (Completed in year 10).</p> <p>Component 2 Taking Part and improving other participants sporting performance (30%)</p> <p>Component 3 Coursework Written Exam (40%)</p>	<p>How will the course be assessed?</p> <p>The course is 60% coursework based.</p> <p>You will be expected to complete written assignments (Called 'Component 1' and 'Component 2').</p> <p>There is an externally assessed examination, which accounts for 40% of the course, which you will undertake at the end of year 11.</p>
<p>What could I do after studying this course?</p> <p>After studying BTEC Sport, you could go onto study the BTEC Sport Level 3 or A-Level at college. This could then lead to university courses.</p> <p>BTEC Sport can be a good starting point for students who are interested in a career in in sports and leisure, such as a fitness trainer, sports coach, PE teacher, physiotherapist, sports psychologist and a nutritionist.</p>	<p>Who should I contact for further information?</p> <p>If you are interested in getting some more information about BTEC Sport don't hesitate to speak to Mr Hazelden who would be more than happy to answer any questions you might have.</p> <p>shazelden@chaucer.sheffield.sch.uk</p>