

2023/24

Key Stage 4 Options Booklet



Contents / Overview

| | |
|--|---|
| <p>Message from the Headteacher <i>Page 3</i></p> <p>Useful Contacts <i>Page 4</i></p> <p>Options Explained <i>Pages 5 - 9</i></p> | |
| <p>Core Curriculum Courses <i>Pages 10 - 15</i></p> <p>English Language English Literature Mathematics Science (Dual Award)* Digital Information Technology (BTEC)</p> <p>*Top performing science students have been invited to study Triple Award Science, requiring two hours of extra study each week after school</p> | <p>All students will study all of these courses</p> |
| <p>EBacc GCSE Courses <i>Pages 16 - 20</i></p> <p>French Geography History Computer Science</p> <p>Other GCSE Courses <i>Pages 21 - 25</i></p> <p>Art and Design Photography Drama Religious Studies</p> <p>Vocational Courses <i>Pages 26 - 34</i></p> <p>Hospitality and Catering Enterprise (Business) Health and Social Care Creative Media Production Music Sport Travel and Tourism Child Development</p> | <p>All students will study three of these courses</p> <p>Students are not able to study both Drama and Music</p> <p><u>Options for Blue Pathway students</u></p> <p>Option 1: French* Option 2: Geography or History Option 3: Free choice</p> <p><u>Options for Green Pathway students</u></p> <p>Option 1: French*, History, Geography or Computer Science Option 2: Free choice Option 3: Free choice</p> <p><u>Options for Yellow Pathway students</u></p> <p>Option 1: Free choice Option 2: Free choice Option 3: Free choice</p> <p>*If a student is able to speak a language other than French <i>that can be assessed at GCSE</i> they will be able to have a 'Free choice' for this option slot</p> |

Message from the Headteacher

Dear Student

This booklet has been produced to help you make some very important choices at this crucial stage in your education. These are the first of many choices young people have to make during their educational development. Making decisions as to which subjects you take in Key Stage 4 is both a challenge and an opportunity. This is the first time you have had to take responsibility for the direction of your education.

You will need help and guidance in deciding which opportunities are right for you. You will find details of the subjects offered within this booklet. The school places great emphasis on ensuring each student is able to make informed decisions regarding their KS4 education. You will be guided individually to ensure you select an appropriate learning pathway to meet your ability and personal preferences.

The role of parents in this process is very important. Please discuss option choices with your parents/carers. Advice is also available from subject teachers and senior members of staff. If parents would like to discuss the KS4 curriculum in more detail please contact school. Contact details are shown on the next page.

Yours faithfully



Joanna Crewe
Head of School



Useful Contacts

Mrs J Crewe – Head of School

jcrewe@chaucer.sheffield.sch.uk

Mr T Hope – Assistant Headteacher – Assessment and Performance

thope@chaucer.sheffield.sch.uk

Ms A Jackson – Assistant Headteacher/Support

ajackson@chaucer.sheffield.sch.uk

Ms K Page – Y9 Year Leader

kpage@chaucer.sheffield.sch.uk

Mr D Askwith – Y9 Engagement Leader

daskwith@chaucer.sheffield.sch.uk

Main office 0114 2322338

enquiries@chaucer.sheffield.sch.uk



Options Explained - 2024

This booklet provides important information about the subjects that students will study in Year 10 and 11 and the choices that are available.

In addition to this booklet, you will need your **Option Choice Form**. These will be distributed on Thursday 26th January.

The form must be completed and handed in to school reception by **Tuesday 6th February**.

If any further information is required, do not hesitate to get in touch with Mr Hope (see 'Useful Contacts' on page 4).

What are 'Key Stage 4 Options' ?

During Key Stage 3 (Y7 to Y9), students have experienced a wide range of subjects. During Key Stage 4 (Y10 and Y11), students study a smaller number of subjects but in greater depth. For the first time, students are able to make some choices about which subjects they study. This is an opportunity to shape their education so that it suits their interests and the pathways that they wish to follow when they leave school.

Students are not given a completely free choice of subjects. The government requires us...

- to ensure that all students study the 'Core Subjects'
- to ensure that a good proportion of students study the 'EBacc'
- to show good performance through 'Progress 8' and 'Attainment 8' measures, which require students to study particular subjects

The Importance of English and Mathematics

The expectation that all students achieve well in both Mathematics and English is absolutely central to our curriculum offer - this will underpin students' success after leaving Chaucer.

Attaining good grades in GCSE Maths and English is a requirement for many future study and employment pathways.

All teenagers who do not achieve at least GCSE grade 4 at English and Maths will have to carry on studying the subjects at college.

School Performance Measures - English Baccalaureate, Progress 8 and Attainment 8

The English Baccalaureate was introduced by the government as a performance measure in 2010. It is a combination of GCSE qualifications:

- English Language and Literature
- Maths
- Sciences
- Geography or History
- A language

The following is from www.gov.uk

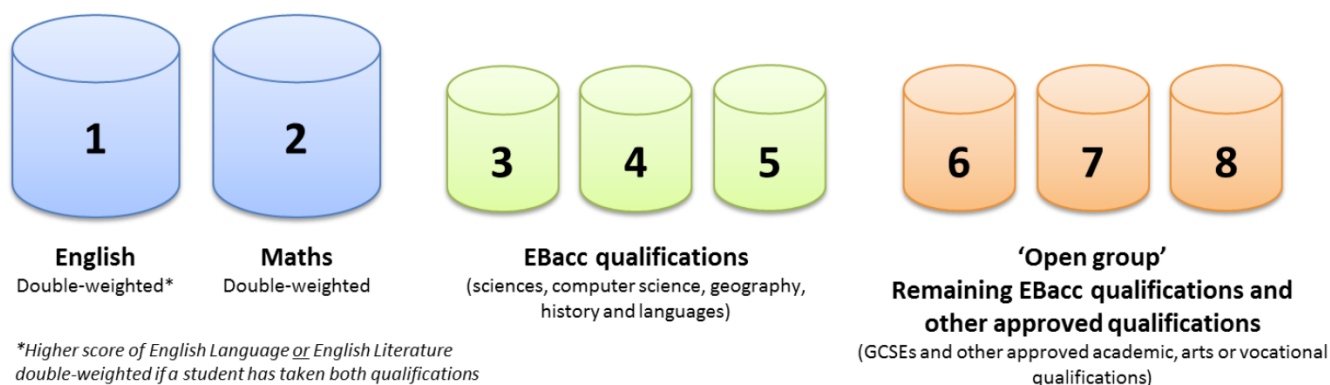
"The EBacc is made up of the subjects which are considered essential to many degrees and open up lots of doors.

A study by the UCL Institute of Education shows that studying subjects included in the EBacc provides students with greater opportunities in further education and increases the likelihood that a pupil will stay on in full-time education. Sutton Trust research reveals that studying the EBacc can help improve a young person's performance in English and maths.

The government's ambition is to see 75% of pupils studying the EBacc subject combination at GCSE by 2022, and 90% by 2025."

As a school, we have a duty to ensure that a good proportion of our students work towards the full English Baccalaureate.

Schools are also judged on measures called 'Progress 8' and 'Attainment 8'. These look at average performance across 8 of their subjects:



Even if students do not study the 'full EBacc', their qualifications still need to meet the requirements for Progress 8 and Attainment 8, set out in the diagram above.

As part of the options process, we must fill the three 'EBacc qualifications' slots. Two of these will be filled by Science (dual award). Slot 5 must be filled by either French, Geography, History or Computer Science.

GCSE courses

The subject pages later in this booklet give an overview of what each course involves and how they are assessed.

For GCSE courses, all external examinations are taken at the end of Year 11. This means that re-sits are not possible.

In the majority of subjects there is no coursework or controlled assessment. See the subject pages for more information.

Vocational Qualifications

Vocational courses offer something different to GCSE. They are more closely related to specific careers and types of work.

Exams for these subjects are spread over the course. There may be resit opportunities for some modules.

Most vocational courses will be awarded at grades:

- Level 1 (equivalent to GCSE grades 1 to 3)
- Level 2 passes at Pass, Merit and Distinction (equivalent to GCSE grades 4 to 8)

Options Pathways

All students will study our core curriculum (Maths, English Literature, English Language, Science and Digital Information Technology) and another three 'Options' subjects.

Typically, students will have the following time allocations:

- 5 hours of English per week (GCSE English Language and GCSE English Literature)
- 5 hours of Maths per week
- 5 hours of Science per week leading to the dual award (2 GCSEs) in Combined Science*
- An average of 1½ hours per week in BTEC Digital IT
- An average of 2.5 hours per week in each of the 3 'Options' subjects
- 1 hour of core PE per week

**Year 9 top performing science students have been invited to extend their Science qualification to the Triple Award (3 GCSEs), requiring 2 extra lessons after school each week*

All students have been placed onto one of three pathways, which will shape their Options choices. We have identified your pathway by analysing your assessment performances.

Blue Pathway Curriculum

Blue pathway students will study the full EBacc – their options must include French and either Geography or History. The remaining option will be a free choice.

Option 1: French

Option 2: Geography or History

Option 3: Free choice

Students on the Blue pathway who do not wish to study the full EBacc selection must request a meeting with Mr Hope to discuss the decision in greater detail.

Green Pathway Curriculum

Students on the Green pathway must select at least one EBacc subject from French, Geography, History and Computer Science. The remaining two options are free choices.

Option 1: French, History, Geography or Computer Science

Option 2: Free choice

Option 3: Free choice

Yellow Pathway Curriculum

Students on the Yellow pathway do not have to pick Geography, History, French or Computer Science if they do not wish to do so. Yellow pathway students will have an options meeting with Mr Hope, Mr Hammonds or Ms Jackson to offer information and guidance on which courses will enable them to be most successful.

Option 1: Free choice

Option 2: Free choice

Option 3: Free choice

Students who can speak foreign languages other than French

If any students are able to speak languages other than French that can be assessed at GCSE, they will be given the opportunity to sit a GCSE in that language.

If a Blue pathway student meets this criteria it will enable them to switch their first option to 'Free choice' rather than 'French'.

If a Green pathway student meets this criteria it will enable them to switch their first option to 'Free choice' rather than 'French, History, Geography or Computer Science'.

How to make your choices

There are many reasons to choose a subject...

- Enjoyment! You will be studying the course for 2 years.
- Ability - choose subjects that you are good at.
- A balanced education. Balance in your choice of subjects will provide you with a wider range of pathways and opportunities in the future.
- Career Relevance. You may not know exactly which employment pathway you will take yet, but even if you have just a vague idea it can be worthwhile finding out which subjects would be essential or useful.

Just as importantly, there are some things which must **not** be reasons to choose a subject...

- Friendships. Do not choose a subject just because a friend is. You are not guaranteed to end up in the same group as them.
- Teacher. You may like the teacher you currently have for the subject but you are not guaranteed to have this teacher in Y10 or Y11.
- Easy. Don't choose a subject just because you think it may be easy. Check out all the details in the option booklet before deciding on your choices.

Completing your options form

Please read all the information in this booklet and discuss it within your family.

Option Choice Forms will be handed out on Thursday 25th January.

Forms must be completed and handed in to the main office by **Tuesday 6th February**.

From Tuesday 6th February onwards, we will begin to build a timetable for September 2024 that enables as many students as possible to have their 'first choice' options.

However, we cannot guarantee that a student will get their first-choice subjects. Some courses may have more students applying than we can cater for; other courses may not have enough students to be viable to run.

Any forms submitted after the deadline could make it more difficult to match your choices, as groups may already be full.

Do not hesitate to get in touch Tom Hope (thope@chaucer.sheffield.sch.uk) if you require any support.

Core Subjects

All students will study these subjects

GCSE English Language

| | |
|--|---|
| Why should I study this course? Everyone needs to understand and to be understood. This is why English is very important. You will need to develop the skills of writing in a variety of ways, understanding what you read and putting your thoughts into words in every subject you do. Doing well in English will help you to do better in other subjects and will be important when applying for college courses, training schemes and employment. You may also find the combination of writing and speaking elements in the course very enjoyable. They will certainly help you to be more confident and to communicate better in and beyond school. | What qualifications will I get? You will gain a single GCSE qualification in English Language. |
| What will I do? During your two-year course you will learn to use words in a variety of ways, from creative writing in stories, plays and poems to more formal writing based on non-fiction texts. To help you with this you will read a wide range of books, see films and videos. You may also visit the theatre and cinema or work with real live authors and poets. Another important part of the course is speaking, which will be reported separately to your grade. You will take part in group discussions, role play, give talks and interviews. | How will the course be assessed? The course is assessed by 100% exam Unit 1 (40% of the final grade): <ul style="list-style-type: none">• Explorations in Creative Reading and Writing• Understanding and producing fiction texts Unit 2 (60% of the final grade): <ul style="list-style-type: none">• Writers' Viewpoints and Perspectives• Understanding and Producing non-fiction texts Unit 3: A Speaking and Listening task, for which you get a grade reported separately |
| What could I do after studying this course? GCSE English language is a basic requirement for virtually all courses and jobs. You will need at least a grade 4 in GCSE English language to be accepted on a Level 3 course at college (these include A levels and National Diplomas) If you achieve a grade 5 or above, you might like to study A level English Language or Literature – even take a degree in this subject. Some careers specifically related to English include journalism, secretarial, personal assistant, librarian, and teacher. | Who should I contact for further information? For further information please speak to your English teacher or Mrs McInnis lmcinnis@chaucer.sheffield.sch.uk |

GCSE English Literature

| | |
|---|--|
| <p>Why should I study this course?</p> <p>You will be reading texts that you will find very enjoyable and stimulating. You will be studying poetry, drama and novels from some of the most important writers from the past and present.</p> <p>You will understand how writers use language and the motivations of characters in texts.</p> <p>You will develop skills and understanding that will help you gain a good qualification in English language as well as English literature.</p> | <p>What qualifications will I get?</p> <p>You will gain a single GCSE qualification in English Literature.</p> |
| <p>What will I do?</p> <p>During your two-year course, you will learn to write well-crafted essays that show your knowledge of the texts you have studied. To help you with this, you will read a wide range of books and see film versions of them. You may also visit the theatre and cinema to watch productions of the texts you have studied.</p> | <p>How will the course be assessed?</p> <p>The course is assessed by 100% exam</p> <p>Unit 1 (40% of GCSE):</p> <ul style="list-style-type: none">• Shakespeare – Romeo and Juliet• 19th century novel - A Christmas Carol <p>Unit 2 (60% of GCSE):</p> <p>Modern texts and poetry – An Inspector Calls</p> <p>Anthology Poetry and Unseen Poetry</p> |
| <p>What could I do after studying this course?</p> <p>If you achieve a grade 5 or above, you might like to study A level English literature – even take a degree in this subject.</p> <p>Some careers where English literature can lead to include: journalism, publishing, working in advertising, librarian, and teacher.</p> | <p>Who should I contact for further information?</p> <p>For further information please speak to your English teacher or Mrs McInnis lmcinnis@chaucer.sheffield.sch.uk</p> |

GCSE Mathematics

| | |
|--|---|
| Why should I study this course? Confidence with mathematical reasoning is essential for everybody's future. Some students will pursue pathways requiring advanced mathematical skills. Many will enter careers that hinge on their ability to be adaptable and to solve problems. All will engage in financial planning and decision making that will be critical for their long-term happiness and wellbeing. | What qualifications will I get? You will get a GCSE in Mathematics. |
| What will I do? You will study a variety of units that fall within the categories of number, algebra, data, shape and geometry. The 9-1 GCSE course involves a balance of procedural skills questions along with questions that involve problem solving and reasoning. | How will the course be assessed? The GCSE is assessed through 3 examinations at the end of Year 11: Paper 1: Calculator Paper 2: Non-calculator Paper 3: Calculator Each assessment is worth 100 marks. The foundation tier is graded from 1-5. The higher tier is graded from 4-9. |
| What could I do after studying this course? Many college courses set a Grade 4 in mathematics as an entry requirement (some will require a Grade 5 or Grade 6): attaining a high grade in mathematics will ensure that you can follow your chosen pathway in the future, even if it isn't a mathematics course. A Level mathematics is a required qualification for higher education pathways in computing, accountancy, economics and of course mathematics. | Who should I contact for further information? Mrs Pinder or Mrs Furness, subject leaders for maths cpinder@chaucer.sheffield.sch.uk sfurness@chaucer.sheffield.sch.uk |

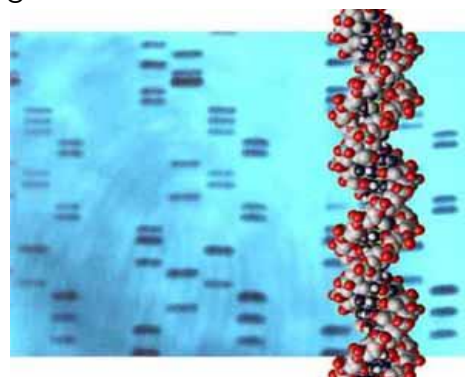
GCSE Dual Science

Why should I study this course?

OCR combined science is a course that covers the three disciplines of Biology, Chemistry and Physics. Science is suitable for all students and the course prepares students with the scientific knowledge and understanding needed to be successful in a rapidly advancing scientific world. The course also prepares students for progression to further scientific study at all levels post-16.

What qualifications will I get?

You will be awarded 2 GCSE's in Combined Science on a grade scale of 0-9.



What will I do?

You will study a total of 6 units over the two years and cover a range of science topics including:

- Cellular biology including photosynthesis and respiration.
- Molecular genetics and DNA fingerprinting and uses in the real world, for example forensic science.
- Environmental science and evolution.
- Reactions of metals and their uses.
- Chemistry of fuels, development of smart materials and chemical reactions.
- Energy, forces and electricity.
- Waves, radiation and matter.

How will the course be assessed?

Science is assessed through a series of externally set written terminal examinations which are sat at the end of year 11.

There are 6 examinations which are available at either foundation or higher tier. Each exam contributes approximately 17% of the final grade awarded.

There are 2 exams for biology, chemistry and physics and they last for 1 hour and 10 minutes per paper.

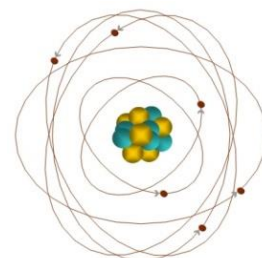
What could I do after studying this course?

In an ever-changing modern world, science is a foundation that will help with study of many courses and careers after school. These courses include scientific careers such as Forensic Science, Sports Science, Science teaching, engineering, nursing, medicine and veterinary science. Science is also useful for anyone considering careers as an electrician, plumber, general teaching, working with animals and the hair and beauty industry.

Who should I contact for further information?

Your science teacher or Dr M Wentworth, Subject Leader for Science.

mwentworth@chaucer.sheffield.sch.uk



BTEC Digital Information Technology

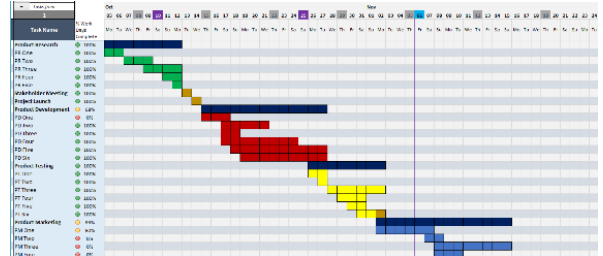
Why should I study this course?

The BTEC Tech Award in Digital Information Technology is a course in which is designed to create confident users of IT applications. You will learn how to use a number of software packages and apply these into a business context.

Anyone who enjoys using computers as part of their work will enjoy the course, you will learn how ICT is used across the world of work.

What qualifications will I get?

The course will enable you to achieve **1 BTEC Tech Award up to Level 2 Distinction*** (Equivalent to GCSE 9-1).



What will I do?

You will study a range of topics including:

Interface design

You will study what makes an effective computer interface, you will then go on to design your very own interactive product.



Interpreting and presenting data

You will learn how to use data and make it meaningful to others. You will learn how to present it effectively so others can understand it.

What could I do after studying this course?

This ICT course provides you with valuable skills for working in organisations that use multimedia technology, e.g. web design, graphics, internet, and be aware of cyber security issues. You will also gain firm foundations into any ICT course at college.

How will the course be assessed?

You will be assessed by a mixture of coursework and exams. The coursework element will contribute 60% of your final mark and 40% will come from the exam at the end of year 11.



Who should I contact for further information?

For further information, please speak to Mr Gillott or email mgillott@chaucer.sheffield.sch.uk

GCSE EBacc Subjects

GCSE French

| | |
|--|---|
| <p>Why should I study this course?</p> <p>“One language sets you in a corridor for life. Two languages open every door along the way.” – Frank Smith</p> <p>The ability to communicate in another language is an extremely valuable life skill – both personally and professionally.</p> <p>On a personal level it gives you an opportunity to develop high levels of resilience, confidence and awareness of other people and their cultures. People who learn a second language have a deeper understanding of their own language and have a greater respect for those who speak more than one language.</p> <p>From an academic point of view, many universities now expect high quality candidates to have some understanding of at least one other language. This is because it demonstrates passion, an ability to learn and a hunger for knowledge.</p> <p>In today's global economy, employers are keen to have... people with language skills working for them. Modern foreign languages also combine well with other professions such as Law, Engineering, Accounting and Medicine. People who can offer language skills in addition to their specialist knowledge are very much in demand today's competitive job market. Tourism is another popular career route as are jobs associated with the media and catering industries.</p> | <p>What qualifications will I get? GCSE in French.</p> <p>How will the course be assessed? The new GCSE is broken down into 4 key skill areas. Listening – 25% Reading – 25% Speaking – 25% Writing – 25% Each skill will be assessed at the end of the two-year course in the form of an exam.</p> <p>What will I do? GCSE is a challenging but rewarding qualification. You will study the French language through a range of contexts. The three key themes are:</p> <ul style="list-style-type: none">• Identity and Culture• Local, National and Global Areas of Interest• Your Future <p>These themes encompass a range of engaging and interesting topics, ranging from 'Social Media' to 'Extreme Sports' – there really is something for everyone! You will continue to build on the foundation built at KS3 and by the end will be prepared to continue studying French at A Level or have a bank of study skills ready to go on pursue other languages, or indeed others interests.</p> <p>Who should I contact for further information? Miss Dennis edennis@chaucer.sheffield.sch.uk</p> |
|--|---|

What could I do after studying this course?

Many students decide to continue their language learning at A-level, some even take it further to degree level. Alternatively, you may decide to use your language skills to study a new language.

If, after the GCSE, you decide not to continue with languages it will always be a valuable experience to have on your CV as it tells employers, colleges and universities that you are a brave, open-minded, resilient person.

GCSE Geography

Why should I study this course?

Geography helps you to make sense of the world around you. It is hands on, it is relevant and it is fun. Our GCSE course is a good mix of topics such as urban issues, world development, extreme environments, rivers and hazards – to name but a few. The course will give you the chance to get to grips with some of the big questions which affect our world, and understand the social, economic and physical forces and processes which shape and change our world.

Recent Geography events studied:

- ✚ Nepal Earthquake
- ✚ Hurricane Dorian
- ✚ Boscastle flash floods
- ✚ The 'Big Dry' drought in Australia

What will I do?

The course is split into human and physical geography. The 'Our Natural World' section covered

- Global hazards
- Changing climate
- Distinctive landscapes
- Sustaining ecosystems.

The human geography section 'People and Society' covers

- Urban futures
- Dynamic development
- UK in the 21st century
- Resource reliance

There will be an opportunity during the course to spend two days out of school on field trips.

Skills developed:

- ✚ Map skills
- ✚ Graphical skills
- ✚ Analysing data
- ✚ Explaining trends
- ✚ Exploring physical and human processes
- ✚ Decision making

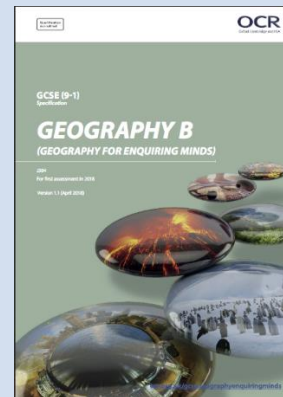
What could I do after studying this course?

Geography is a broad based academic subject which will open up options for you in your future. Employers and universities see geography as a robust academic subject rich in skills, knowledge and understanding. As a subject linking the arts and the sciences it is highly flexible in terms of what you can combine it with, both at GCSE and A Level. If you choose to take geography on to university there are hundreds of courses to choose from and the range of career areas accessed by graduates of geography will probably surprise you.

What qualifications will I get?

GCSE in Geography - OCR Geography B - Geography for Enquiring Minds (9-1)

You can also use GCSE Geography as part of the Ebacc qualification



How will the course be assessed?

You will take 3 exams in the summer

- Our natural world
- People and Society
- Geographical exploration



Who should I contact for further information?

For further information please speak to Miss Sutton, subject leader for geography

jsutton@chaucer.sheffield.sch.uk



GCSE History

Why should I study this course?

There are many, many reasons why history is so important, almost as many as years of human existence!

History helps you discover how the world you live in today has evolved and to understand how things have come to be as they are. It provides you with context to understand the world around you and the society you live in. History helps you to develop the skills to look beyond the headlines, to ask questions properly and to express your own opinions. History lets you learn how and why people behaved as they did, whether they are Elizabeth I, Adolf Hitler or Martin Luther King Jr.

What will I do?

You will complete the Eduqas GCSE History course.

You will begin by studying a British Depth study called Conflict and Upheaval covering the time period 1337-1381, followed by a non-British depth study on Germany 1919-1939. After this you will look at a specific country and time period of that country USA 1929-2000 and finally the development over time of a specific theme – Crime and Punishment.

What could I do after studying this course?

GCSE History is highly prized by colleges and employers. Success in the subject provides students with the ability to express their views and opinions (both oral and written) in a clear manner. It also enables students to put forward well researched ideas and arguments in a concise manner, to investigate and assess a variety of materials and to organise such material in a logical and coherent way. The study of History can be used in many diverse careers from teaching and museum work to journalism and the media, to law and politics.

What qualifications will I get?

One GCSE with the 9-1 grading system
The awarding body is Eduqas

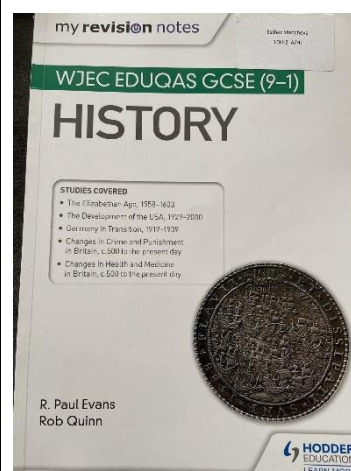
How will the course be assessed?

Modern World History

The assessment takes place at the end of the year in the form of two written exams, based on four different time periods of History both British and World History including studies on, Conflict and Power, Crime and Punishment, America 1929-2000 and Nazi Germany.

Who should I contact for further information?

See Mr Myers or email
smyers@chaucer.sheffield.sch.uk



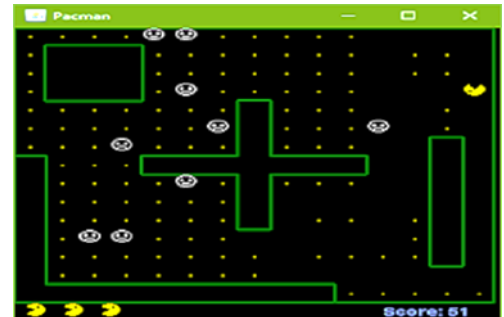
GCSE Computer Science

Why should I study this course?

The GCSE in Computer Science is a course designed to allow students to find out how computers actually work. Anyone who enjoys using computers to solve problems and make things happen will enjoy the course. This is a high level of thinking course and you will need strong attention to detail, and a high level of self-motivation. You will be learning how computer games are programmed and create simple programs for yourself.

What qualifications will I get?

GCSE qualification (9-1)



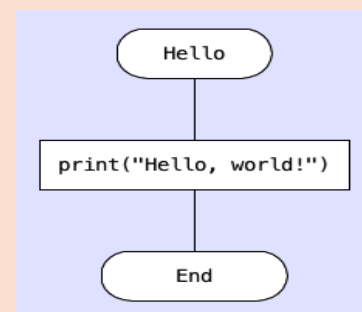
What will I do?

You will study a range of topics including designing and interpreting algorithms, learn how data is represented, understanding the components of computer systems and networking. The course will be assessed by 2 examinations. The written paper is a rigorous, intellectually challenging examination with a weighting of 50% that requires a high level of computational thinking. You will also complete a computer practical exam of your coding skills which contributes to 50% of your grade.

How will the course be assessed?

1 written exam taken at the end of year 11.

1 computer practical exam taken at the end of year 11.



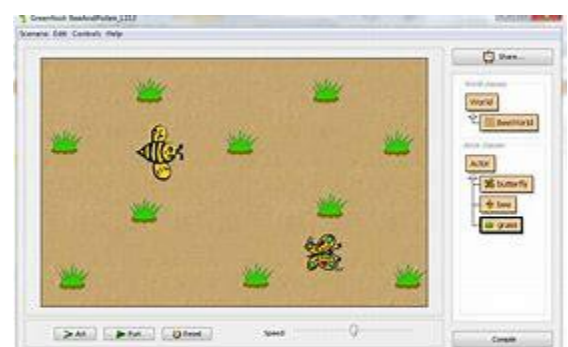
What could I do after studying this course?

This computer science course provides you with valuable skills for working in a programming environment. You will have learned the core principals of computer programming which are common in app and games development. This course will fully prepare you for A Levels in Computing, or apprenticeships in software or game design.

Typical careers following computer science are games developer, web developer, network technician, software testing, data security.

Who should I contact for further information?

For further information please speak to Mr Gillott or email him via mgillott@chaucer.sheffield.sch.uk



GCSE Other Subjects

GCSE Art and Design

| | |
|--|--|
| <p>Why should I study this course?</p> <p>GCSE Art and Design is a fantastic course which allows you to discover the work of exciting artists, designers and craftspeople and experiment with a wide range of art materials and techniques. You will have the opportunity to take part in gallery visits to study the work of artists and enrich your portfolio.</p> | <p>What qualifications will I get?</p> <p>A GCSE in Art and Design</p> |
| <p>What will I do?</p> <p>In Year 10 you will take part in workshops to develop your skills in a range of techniques including drawing and painting, sculpture, ceramics, printmaking (etching/ mono-printing), felt making, silk painting, and batik. You will investigate the work of a range of artists, craft persons and designers to help you develop your ideas. You will use all this work to explore and develop ideas, and then you will make a final piece.</p> <p>At the end of Y10 you will begin your next piece of work, and we hope to take you to the Yorkshire Sculpture Park for inspiration. You will develop your own responses from several starting points, and could choose to do clay work, fashion design, painting, architectural models, textiles or fine art. You will make drawings and recordings, investigate the work of others and again use this work to make your individual final piece.</p> <p>January of Y11, you will receive your exam paper from AQA. You will have 7 questions to choose from, and several weeks to prepare your response. You know how to do this- because it is the same process you have done for your coursework. After the preparation period, you will have 10 hours of supervised time to complete a final piece. Usually, the 10 hours would run in 5 sessions over 2 weeks.</p> | <p>How will the course be assessed?</p> <p>Final presentation May of Y11.</p> <ul style="list-style-type: none"> • 1 or more completed project assignments (prep / research / development / final piece) • Portfolio of work from the course (study sheets / homework book / experimental and workshop pieces). |
| <p>What could I do after studying this course?</p> <p>There are many jobs that you could consider after studying GCSE Art & Design: Animator, Graphic Designer, Photographer, Teacher, Artist, Set Designer, Prop Designer, Illustrator, Architect, Marketing – TV & Radio, Beautician, Fashion designer, Architect, Landscape Gardener, Interior designer.</p> | <p>Who should I contact for further information?</p> <p>If you have any questions about this course please speak to Mr Green jgreen@chaucer.sheffield.sch.uk</p> |

GCSE Photography

| | |
|--|---|
| <p>Why should I study this course?</p> <p>Photography develops visual awareness, creative skills and aesthetic judgement.</p>  <p>You will gain practical experience in communicating meanings, ideas and intentions through the medium of photography, exploring colour, line, tone, texture, shape, pattern, composition, scale, sequence, surface, contrast as well as gaining knowledge of important photographers.</p> | <p>What qualifications will I get?</p> <p>AQA GCSE</p> |
| <p>What will I do?</p> <p>Your studies will cover all aspects of photography (primarily digital), allowing a breadth of exploration of image making techniques.</p> <p>You will work in one or more area(s) of photography, such as portraiture, location photography, studio photography, experimental imagery, installation, documentary photography, photojournalism, moving image: film, video and animation, fashion photography.</p> <p>You will be required to study the work of Photographers in order to develop your own work further. Much of this work will involve experimentation of techniques and developing ideas in a sketchbook.</p> | <p>How will the course be assessed?</p> <p><u>Portfolio (60%)</u></p> <ul style="list-style-type: none"> • Completed photographic briefs with rigorous supporting study to show the development of ideas leading to the final outcome(s) • Sketchbooks/ workbooks on a theme/ subject showing detailed studies/ ideas for future developments including in-depth critical study of the work of Photographers • Investigation of a visual concept or theme e.g. The Formal elements: colour, line, form, shape, tone, texture to further skills, knowledge and understanding <p><u>Externally set assignment (40%)</u></p> <p>Task paper issued by AQA from 2nd January of year of examination with unlimited preparation time and 10hrs supervised time</p> |
| <p>What could I do after studying this course?</p> <p>Photography is an important subject for future careers in Art & Design, Media, Fashion, TV and Film, Teaching etc. It also provides ideas and skills for creative leisure.</p> | <p>Who should I contact for further information?</p> <p>Mr Green – Subject Leader jgreen@chaucer.sheffield.sch.uk</p> <p>Teachers of Photography gmujiushi@chaucer.sheffield.sch.uk ckalnar@chaucer.sheffield.sch.uk</p> |

GCSE Drama

Why should I study this course?

You should study this course if you enjoy drama!

Your practical skills will be refined and will demonstrate creativity, reflection and resilience, as well as developing confidence and strong presentation skills.

Your written skills will be developed through a range of tasks.

Studying drama will give you opportunities for higher order thinking, by considering ideas which go beyond language. This is great brain-training which will help you in other areas too

What qualifications will I get?

You will receive a GCSE in Drama for taking this course. This is through the EDUQAS exam board.



What will I do?

You will be given the opportunity to develop not only your performance skills but also your design skills in areas such as: Sound design, set design, Costume, Hair and Make-Up Design

You will collaborate in devising your own piece of theatre and perform in a performance from a text. You can choose to concentrate on acting or design. You will view a live theatre production. The Eduqas GCSE Drama specification has three components: Devising Theatre, Performing from a Text, and Interpreting Theatre

How will the course be assessed?

Component 1: Devising Theatre 40%. You will work in a team to create a piece of theatre based on a stimulus provided by the board. You will perform this and then evaluate it in a piece of coursework (750 words and an evaluation of 750 words).

Component 2: Performing from a text: 20%. You will work on a text and perform it to an outside examiner in year 11.

Component 3: 40% A written exam on the play "Find Me" by Olwyn Wymark and a theatre review.

What could I do after studying this course?

Drama will enable you to demonstrate many skills which employers, colleges and universities will be looking for. Some students go on to study Drama A number of students forge successful careers as Actors, Directors, Lighting or Sound Designers, Costume, Hair and Make-Up Designers or Stage Designers. There are many other career paths within the industry including Stage Managers, Press and PR Managers and Producers. Others go on to various Universities (including Russell Group) to read a diverse range of subjects and work within an extremely broad range of careers including teaching, law, publishing, politics, translation, science, occupational therapy, journalism.


Who should I contact for further information?

For further information please speak to Miss Patterson in 102 or email spatterson@chaucer.sheffield.sch.uk

See also the Eduqas Drama Webpage:



GCSE Religious Studies

| | |
|---|---|
| <p>Why should I study this course?</p> <p>Religious Studies is not about making you 'religious', it is about enabling you to think for yourself about religious and moral issues. It is about you, your life and the issues you will face when you leave school and go into the multi-ethnic, multi-faith society which is the UK.</p> <p>It is an excellent course if you enjoy:</p> <ul style="list-style-type: none"> • Learning about other people's beliefs, the nature of the society you live in and the big issues in life which generate debate. • gaining an understanding of what causes prejudice, hatred and violence in our world. • having the opportunity to explore religious and moral beliefs in a safe and questioning environment. <p>GCSE Religious Studies is the subject for you.</p> | <p>What qualifications will I get?</p> <p>One full GCSE in Religious Education.</p> |
| <p>What will I do?</p> <p>During the course we will study a variety of topics and issues, looking at them from Christian and either Islamic or Buddhist viewpoints. The course looks at two key components. Component 1 is the study of religions: beliefs, teachings and practices of the two selected religions. Component 2 is made up of Thematic studies where we look at 4 of the below themes. Religious, philosophical and ethical studies themes:</p> <ul style="list-style-type: none"> • Theme A: Relationships and families. • Theme B: Religion and life. • Theme C: The existence of God and revelation. • Theme D: Religion, peace and conflict. • Theme E: Religion, crime and punishment. • Theme F: Religion, human rights and social justice. | <p>How will the course be assessed?</p> <p>You will complete 2 written exams at the end of year</p> <p>There is no coursework or controlled assessment.</p> |
| <p>What could I do after studying this course?</p> <p>The main advantage of GCSE Religious Studies is that it prepares you for life and gives you the skills you will need to make the decisions every adult faces. It is also an excellent preparation for:</p> <ul style="list-style-type: none"> • A Level Social Sciences (law, sociology and psychology). • A Level Religious Studies, History and English. • Jobs that appreciate the skills GCSE Religious Studies will give you such as: medicine, the police, the armed forces and the caring professions (social work, nursing and probation service). | <p>Who should I contact for further information?</p> <p>For further information please speak to Mr Mitchell in 112 or email dmitchell@chaucer.sheffield.sch.uk</p>  |

Vocational Courses

WJEC Hospitality & Catering Award

| | |
|---|--|
| <p>Why should I study this course?</p> <p>The hospitality industry employs 1.6 million people (around 6% of the total working population) and is worth £55 – £60 billion per year (source www.caterer.com). It is one of the fastest growing industries and is currently the 5th biggest industry in the UK.</p> <p>The course is designed to inspire and enthuse learners to consider a career in the hospitality and catering industry, rather than just being a customer or patron. It gives learners the opportunity to gain a broad knowledge and understanding of, and develop skills in, this industry. Prepare, cook and serve a variety of nutritional dishes, in a safe and hygienic manner that are suitable for different situations and customers' needs and requirements. They will look at all aspects of the business but also menu planning.</p> | <p>What qualifications will I get?</p> <p>The WJEC Level 1/2 Award in Hospitality and Catering has been designed to support students who want to learn about this vocational sector and the potential it can offer them for their careers or further study. It is most suitable as a foundation for further study, providing learners with a core depth of knowledge and a range of specialist and general skills that will support their progression to employment in the hospitality and catering industry.</p> |
| <p>What will I do?</p> <p>You will be taught the range of skills, techniques and knowledge needed to work in a successful career in catering.</p> <p>You will be given a good foundation of knowledge, understanding and skills that are required by the hospitality and catering industry. You will develop a variety of skills, including food preparation and cooking skills, organisation, time management, planning, communities and problem solving.</p> | <p>How will the course be assessed?</p> <p>Unit 1 – The hospitality and catering industry 40% external exam 1 ½ hours – which can be sat twice.</p> <p>Unit 2 – hospitality and catering in action 60% 9-hour interval assessment with a controlled task set by WJEC.</p> |
| <p>What could I do after studying this course?</p> <p>With the broad knowledge & understanding of the hospitality industry, this could lead to a variety of careers such as marketing and promotion, cooking, food and beverage service, and accommodation services i.e. in restaurants, pubs, hotels, guest houses, coffee shops, and theme parks. With learners having the potential opportunity to enter employment directly in a junior job role.</p> <p>It also supports progression to a more specialised level 3 vocational or academic hospitality or catering qualification or an apprenticeship.</p> | <p>Who should I contact for further information?</p> <p>Mr Green – Subject Leader jgreen@chaucer.sheffield.sch.uk or Miss Hayes the Subject Teacher directly on hhayes@chaucer.sheffield.sch.uk</p> |

BTEC Enterprise (Business)

Why should I study this course?

BTEC Tech Award in Enterprise Studies is a practical course looking at the world of business. It is suitable for any student who is interested in finding out about or working in a business environment or in running their own business.



What qualifications will I get?

BTEC Tech Awards are the equivalent of 1 GCSE at grade 1-9 depending on the level of qualification achieved.

The grade of qualification you earn will depend on the standard of coursework you produce throughout the course and your exam grade.

L2 Distinction* = Grade 8.5 at GCSE

L2 Distinction = Grade 7 at GCSE

L2 Merit = Grade 6 at GCSE

L2 Pass = Grade 4 at GCSE

L1 Distinction = Grade 3 at GCSE

L1 Merit = Grade 2 at GCSE

L1 Pass = Grade 1 at GCSE

What will I do?

You will conduct research based around real businesses, usually in your local area.

Your assignments will include using computers to create a range of professional documents. This includes reports and letters using word processor, 'PowerPoint' to create a presentation and other software such as spread sheets and DTP for other business activities.

How will the course be assessed?

The course is assessed over 2 years.

BTEC Tech Award in Enterprise will involve the study of 3 components. The course has two internally assessed components, and one externally assessed component. These components build on each other starting with exploring the sector, to developing knowledge, skills and best practices before applying this knowledge, skills and best practices.

What could I do after studying this course?

You could go on to study Business at level 3 at college or sixth form.

Business Studies also gives a broad introduction to the world of work and can open up a wide choice of careers.

Job ideas using business studies:



secretarial/clerical, administration, financial planning, marketing, public relations, legal work, management or personnel.

Who should I contact for further information?

For further information please speak to Ms Jackson/Mr Wright or email via ajackson@chaucer.sheffield.sch.uk or mwright@chaucer.sheffield.sch.uk




BTEC Health & Social Care

| | |
|--|--|
| <p>Why should I study this course?</p> <p>BTEC Tech Award in Health & Social Care is a practical course looking at individuals' rights, the needs of the individuals, cultural diversity, the human body and the factors affecting its development at different life stages. It is suitable for any student who is interested in finding out about or working in the Health or Social Care areas.</p> | <p>What qualifications will I get?</p> <p>BTEC Tech Awards are the equivalent of 1 GCSE at grade 1-9 depending on the level of qualification achieved.</p> <p>The grade of qualification you earn will depend on the standard of coursework you produce throughout the course and your exam grade.</p> <p>L2 Distinction* = Grade 8.5 at GCSE L2 Distinction = Grade 7 at GCSE L2 Merit = Grade 6 at GCSE L2 Pass = Grade 4 at GCSE L1 Distinction = Grade 3 at GCSE L1 Merit = Grade 2 at GCSE L1 Pass = Grade 1 at GCSE</p> |
| <p>What will I do?</p> <p>You will understand how we grow develop throughout our lives, get to know how the Health and Social Care sector works and the care values that underpin it as well as help to improve an individual's health and wellbeing.</p> <p>Your assignments will include using computers to create a range of professional documents.</p> | <p>How will the course be assessed?</p> <p>The course is assessed over 2 years.</p> <p>BTEC Tech Award in Health and Social Care will involve the study of 3 components. The course has two internally assessed components, and one externally assessed component. These components build on each other starting with developing knowledge and understanding of the sector, appreciating the importance of care values and analysing and evaluating their skills relating to health and wellbeing.</p> |
| <p>What could I do after studying this course?</p> <p>The course provides you with the knowledge and skills to go on and study level 3 qualifications at college such as BTEC Nationals in Health and Social Care. You could also go on to an apprenticeship in health and social care and early years areas.</p>  | <p>Who should I contact for further information?</p> <p>For further information please speak to Mrs Jackson / Mr Wright / Mr Gillott or email them at: gjackson@chaucer.sheffield.sch.uk or mwright@chaucer.sheffield.sch.uk or mgillott@chaucer.sheffield.sch.uk</p>  |

BTEC Creative Media Production

| | |
|---|--|
| <p>Why should I study this course?</p> <p>Creative Media Production is a course, which is designed to create confident creative users of IT applications and an understanding of digital media.</p> <p>It enables students to create their own media products and includes a wide variety of digital media.</p> <p>The course includes practical elements and you will be using IT in most of your lessons. You will develop a body of skills and knowledge related to the media industry.</p> | <p>What qualifications will I get?</p> <p>BTEC Tech Awards are the equivalent of 1 GCSE at grade 1-9 depending on the level of qualification achieved.</p> <p>The grade of qualification you earn will depend on the standard of coursework you produce throughout the course and your exam grade.</p> <p>L2 Distinction* = Grade 8.5 at GCSE L2 Distinction = Grade 7 at GCSE L2 Merit = Grade 6 at GCSE L2 Pass = Grade 4 at GCSE L1 Distinction = Grade 3 at GCSE L1 Merit = Grade 2 at GCSE L1 Pass = Grade 1 at GCSE</p> |
| <p>What will I do?</p> <p>You will study a range of topics including interpreting films, websites and adverts. You will also learn how to research a media story and learn to take dynamic photos. You will develop your practical skills and create several coursework projects.</p> | <p>How will the course be assessed?</p> <p>The course is assessed over 2 years.</p> <p>BTEC Tech Award in Creative Media Production will involve the study of 3 components. The course has two internally assessed components, and one externally assessed component. These components build on each other starting with exploring media products, developing digital media production skills and reviewing and applying digital skills and techniques.</p> |
| <p>What could I do after studying this course?</p> <p>This course provides you with valuable skills for working in organisations that use multimedia technology, e.g. web design, graphics and the internet.</p> <p>It will also give you an insight into the media and the world of journalism. It will give you a good start to Media, English Language and Film studies courses at college.</p> | <p>Who should I contact for further information?</p> <p>For further information please speak to Mr Gillott / Mr Wright or email via mgillott@chaucer.sheffield.sch.uk or mwright@chaucer.sheffield.sch.uk</p>  |

BTEC Music (Performing Arts)

| | |
|--|--|
| <p>Why should I study this course?</p> <p>You should take BTEC Performing Arts in music if you enjoy performing music, being a member of a band, or are interested in a possible career in the music industry.</p> <p>This is an opportunity to learn about the music industry and its job roles. You will learn and improve on a given instrument. You will work as a band member and as an individual. You will develop your musical and interpersonal skills in the course.</p> | <p>What qualifications will I get?</p> <p>BTEC Tech Awards are the equivalent of 1 GCSE at grade 1-9 depending on the level of qualification achieved.</p> <p>The grade of qualification you earn will depend on the standard of coursework you produce throughout the course and your exam grade.</p> <p>L2 Distinction* = Grade 8.5 at GCSE L2 Distinction = Grade 7 at GCSE L2 Merit = Grade 6 at GCSE L2 Pass = Grade 4 at GCSE L1 Distinction = Grade 3 at GCSE L1 Merit = Grade 2 at GCSE L1 Pass = Grade 1 at GCSE</p> |
| <p>What will I do?</p> <p><u>Unit 1: Performing:</u> You will be given a brief by the exam board. You will have to research a given, published piece of music. You will have to rehearse it and perform to a live audience. It will be recorded at the start, middle and end of the process.</p> <p><u>Unit 2: Creating:</u> you will be given a brief by the exam board. You will need to compose an original piece of music which suits the brief. You will work as part of a band on your individual instrument. You will learn how to create, rehearse and refine your own original work.</p> <p><u>Unit 3: Performing Arts in Practice.</u> You will learn about areas of the performing arts industry that need to be considered when responding to a commission, and will consider these when coming up with and pitching your own idea.</p> | <p>How will the course be assessed?</p> <p>You will be assessed through project work. For Units 1 and 2 you will undertake projects (not exams) in response to briefs. The project for each Unit will take 10 hours and be worth 30% of your qualification. These are internally marked and the exam board will moderate or check the marks.</p> <p>In Unit 3 you will undertake another project (no exam) in response to a brief, which will take 20 hours and be worth 40% of your qualification. It is externally marked by the exam board.</p>  |
| <p>What could I do after studying this course?</p> <p>BTEC Performing Arts in Music will help you in any career you choose. You will build confidence to perform publicly and communicate your talents clearly to others.</p> <p>Of course, the BTEC proves your ability in the music industry and college courses will appreciate your dedication in BTEC music if you are looking to study them at post 16 level.</p> | <p>Who should I contact for further information?</p> <p>Please see Miss Patterson for any further information on the course or email spatterson@chaucer.sheffield.sch.uk</p> |

BTEC Travel & Tourism

Why should I study this course?

The BTEC Travel and Tourism course is a practical course looking at developing the learner's skills, knowledge and understanding of, the travel and tourism sector.

You will look at tourism in the UK including travel and tourism destinations and also look at factors affecting worldwide travel and tourism.



What qualifications will I get?

BTEC Tech Awards are the equivalent of 1 GCSE at grade 1-9 depending on the level of qualification achieved.

The grade of qualification you earn will depend on the standard of coursework you produce throughout the course and your exam grade.

L2 Distinction* = Grade 8.5 at GCSE

L2 Distinction = Grade 7 at GCSE

L2 Merit = Grade 6 at GCSE

L2 Pass = Grade 4 at GCSE

L1 Distinction = Grade 3 at GCSE

L1 Merit = Grade 2 at GCSE

L1 Pass = Grade 1 at GCSE

What will I do?

You will be studying a range of topics including Travel and Tourism organisations and destinations. You will also look at influences on global Travel and Tourism and Customer needs with in the industry.

Your assignments will include using computers to create a range of professional documents. These includes report writing using word processor and 'PowerPoint' to create a presentation.

How will the course be assessed?

BTEC Tech Award in Travel and Tourism will involve the study of 3 components. The course has two internally assessed components completed during lessons worth 60% of your grade, and one externally assessed exam worth 40% of your grade. These components build on each other starting with exploring the sector, to developing knowledge, skills and best practices before applying this knowledge skills and best practices.

What could I do after studying this course?

The course provides you with the knowledge and skills to go on and study level 3 qualifications at college, such as BTEC Nationals in Travel and Tourism.

The course also gives the potential opportunity in the future to enter a wide range of job roles within the travel and tourism sector, for example posts in travel agencies, hotels, visitor attractions and tourist information centres.

Who should I contact for further information?

For further information please speak to Mr Gillott / Mr Wright or email via mgillott@chaucer.sheffield.sch.uk or mwright@chaucer.sheffield.sch.uk



OCR Child Development

Why should I study this course?

The OCR Child Development course is designed to encourage learners to consider the development of children from conception to age 5.

It looks at health and well-being for child development; equipment and nutritional needs of children from birth to age 5 and the development of a child from birth to age 5.



What qualifications will I get?

The OCR Cambridge National Certificate is the equivalent of 1 GCSE at 9-1 grade depending on the level of qualification achieved.

The grade of qualification you earn will depend on the standard of work you produce throughout the course.

L2 Distinction* = 8.5 Grade at GCSE

L2 Distinction = 7 Grade at GCSE

L2 Merit = 6 Grade at GCSE

L2 Pass = 4 Grade at GCSE

L1 Distinction = 3 Grade at GCSE

L1 Merit = Grade 2 at GCSE

L1 Pass = Grade 1 at GCSE

What will I do?

There are 3 units that will be studied over the duration of the course.

To study this course, you will need to have opportunities to observe a child under the age of 5 outside of school. (this can be a family member or friend)

How will the course be assessed?

It consists of three units:

- One unit is assessed by exam at the end of year 11 – 40% of your grade
- Two units are internally assessed and completed in lessons; these contribute 60% of your grade

What could I do after studying this course?

The course provides you with the knowledge and skills to go on and study level 3 qualifications at college and is a good grounding for further childcare courses or entry into work or apprenticeship.



Who should I contact for further information?

For further information please speak Mr Gillott / Mrs Jackson or email via mgillott@chaucer.sheffield.sch.uk or ajackson@chaucer.sheffield.sch.uk



BTEC Sport

Why should I study this course?

If you are interested in learning about the structure of the human body and how it performs and is affected during exercise, BTEC Sport would be an excellent course for you to study.

As part of the course you will be learn about the components of fitness and how these are essential to performance in sport. You will also design your own 6-week training programme and evaluate its impact on your performance.

There is one practical unit which will require you to complete a self-evaluation of your own abilities in team and individual sports.

What will I do?

During the course you will undertake 4 units of work.

These Units are:

Unit 1 Fitness for sport and exercise
Unit 2 Practical Performance in Sport
Unit 3 Applying the Principles of Personal Training
Unit 5 The Sports Performer in Action

What could I do after studying this course?

After studying BTEC Sport, you could go onto study the BTEC Sport Level 3 or A-Levels at college. This could then lead to university courses.

BTEC Sport can be a good starting part for students who are interested in a career in in sports and leisure, such as a fitness trainer, sports coach, PE teacher, physiotherapist, sports psychologist and a nutritionist.

What qualifications will I get?

BTEC is the equivalent of 1 GCSE at 1-9 grade depending on the level of qualification achieved.

The grade of qualification you earn will depend on the standard of coursework you produce throughout the course.

| BTEC Grade | GCSE Equivalent |
|-----------------------|-----------------|
| Distinction* | 8 |
| Distinction | 7 |
| Merit | 6 |
| Pass | 4 |
| Level 1 Qualification | 1-2 |

How will the course be assessed?

The course is 75% coursework based. You will be expected to complete written assignments and projects in each of the 4 units that you study. There is an externally assessed online examination, which accounts for 25% of the course, which you will undertake at a suitable point of the year

Who should I contact for further information?

If you are interested in getting some more information about BTEC Sport don't hesitate to speak to Mr Hazelden who would be more than happy to answer any questions you might have.
shazelden@chaucer.sheffield.sch.uk