

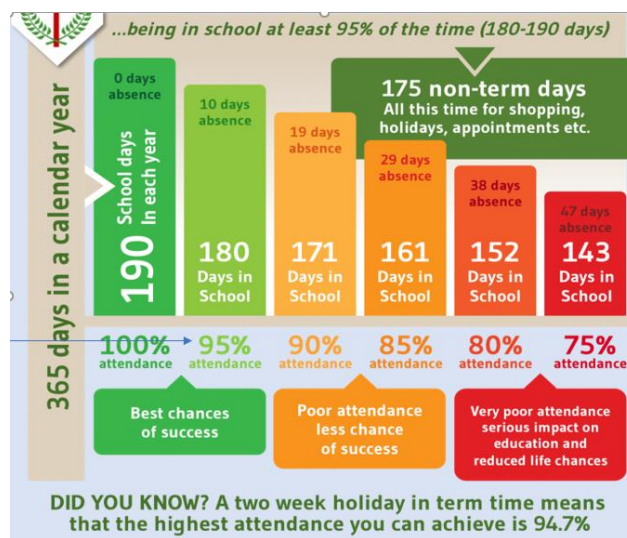
27 April 2023

Dear Parent/Carer

I have recently undertaken the role of lead for attendance at Chaucer and am writing to inform you of the message that has been shared this week with students regarding the importance good attendance has in ensuring young people achieve well in school. There is a great deal of information in this letter, but I would be grateful if you can take the time to read it and encourage your child to attend as much as possible as, as you will see, it is absolutely in their interests to do so.

The potential impact of attendance for your child

The figure below shows how the number of days a child misses per school year affects their attendance percentage. Please note how a two-week holiday taken in term-time means that a student would not be able to meet their 95% attendance target even if they never missed another day of school that year.

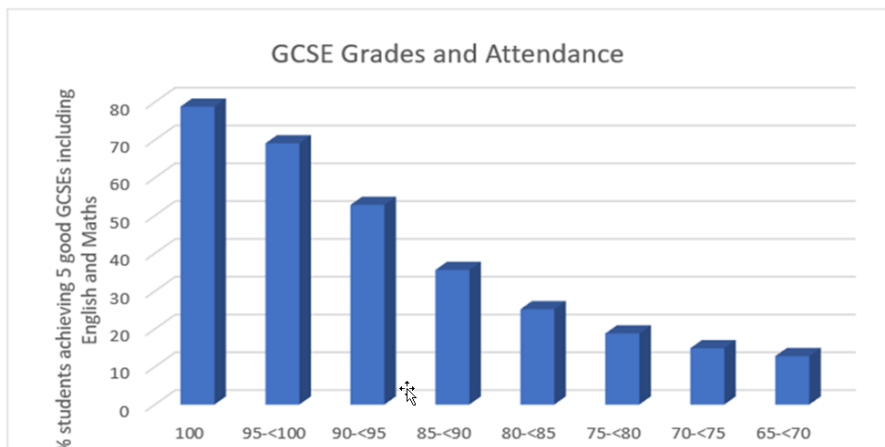


The figure below shows what a child's attendance percentage over the course of 5 years means in terms of the number of days and weeks missed. Highlighted in pink is what a typical Chaucer child's current overall attendance means for a child if it doesn't improve – a year missed of education:

Attendance	Days lost	Equivalent	Terms lost	Days lost	Equivalent	Terms lost
100%	No days lost					
95%	50 days lost	Equivalent of 10 weeks	Over 1 and a half terms			
90%	95 days lost	Equivalent of 19 weeks	Two and a half terms lost			
85%	145 days lost	Equivalent of 29 weeks	Over 4 terms lost			
80%	190 days lost	Equivalent of 38 weeks	1 year lost			
75%	235 days lost	Equivalent of 47 weeks	Over 1 year and one term lost			

I'm sure it will be no surprise to you, that poor attendance leads to poorer outcomes for students and limits the opportunities they have when they leave school at 16. The figure below shows the percentage of students nationally gaining 5 good GCSEs including English and maths. This is an important measure because these are the grades needed for students to have the widest choices of courses post-16.

If they fail to achieve these grades, their choices become more limited as, for example, they will be unable to take A levels or BTEC National courses. As you can see, a student with 95% + attendance has at least close to a 70% chance of gaining these grades, but their chances of doing so decline significantly once their attendance falls below 90%. Once it is below 80%, they have less than a 20% chance of achieving 5 good grades including English and maths:



The impact attendance has on students' performance is the same at Chaucer as it is nationally.

- Students whose attendance is 95% or above perform as well as we could expect them to, with grades of 4, 5 and above.
- If attendance is below 90%, they will do more than a grade worse in every subject. They can expect a mixture of grade 3s and 4s.
- If attendance is below 80%, they are likely to perform nearly 2 grades worse, and likely grades 2 and 3.
- If their attendance is below 70%, that is 3 grades worse and potential grade 5s becoming 1s.

What Chaucer School is doing to promote good attendance

Moving forward, we will be ensuring that students know what their attendance percentage is both overall and for each week. They will also know whether or not it is at the 95% target. Approximately 40 students in each year group whose attendance is between 70-90% are being supported by form tutors and year leaders to improve their attendance. Students with good or improving attendance will be rewarded with spot prizes and given the opportunity to attend end of term rewards events. From next week onwards, we will be sending a thank you text message to all parents of students who achieve 100% attendance each week. Parents of any student who achieves 100% attendance over a half-term will also be entered into a prize draw.

If you have been around the vicinity of the school in the morning recently, you may have noticed staff from Chaucer in and around local shops insisting students move quickly on to the school site, so they are on time. This is to ensure punctuality to school improves and this approach has received positive comments in the community. Students who do arrive late to school are challenged. We will continue to do this moving forward. Students are expected to arrive at their form room no later than 8.35 in the morning, after which point they will be recorded as late.

I hope you can see from this letter that our expectations around student attendance are now high and that we are committed to seeing it improve. I do want to stress, however, that we want to work with parents to remove any barriers to good attendance that students and families may be experiencing. If you would like to get in touch regarding this, please contact school by telephone or email the Attendance Team at attendance@chaucer.sheffield.sch.uk.

Thank you for taking the time to read this letter. If there is anything you would like clarifying or to discuss further, please feel free to email me at dmountford@chaucer.sheffield.sch.uk.

Kind regards

Dave Mountford

Dave Mountford

Assistant Headteacher